

GREENPEACE

A DEADLY TRADE-OFF



**IOI's Palm Oil Supply and its
Human and Environmental Costs**





“This vast economic and environmental crisis is repeated year after year, as a few hundred businesses and a few thousand farmers profit from land and plantation speculation practices, while tens of millions of Indonesians suffer health costs and economic disruptions.”

The World Bank (2016) 'The Cost of Fire an Economic Analysis of Indonesia's 2015 Fire Crisis'
Indonesia Sustainable Landscapes Knowledge Note: 1 February 2016

School children in the playground against the background of thick haze from nearby peatland fires.
24/10/2015 © Rante/Greenpeace

Following IOI's Sustainable Implementation Plan, announced on August 8th this year, we have moved fast to meet one of our primary objectives, which is to build a traceable, transparent and sustainable Palm Oil supply chain.

In addition to our on-site mill verification program [...], we are taking a number of risk mitigation actions.

Firstly, we have requested third party suppliers to the group to confirm their commitment to our new Sustainable Palm Oil Policy. All third party suppliers already confirmed their commitment to the previous IOI Loders Croklaan Sustainable Palm Oil Sourcing Policy.

Secondly, we take direct responsibility for ensuring that directly sourced mills are compliant to our Sustainable Palm Oil Policy by direct engagement with these mills. [...] We continuously monitor our third party suppliers and the indirectly sourced mills. If issues arise, we will regularly contact the relevant third party supplier and monitor the actions they take to address these issues.

Thirdly, we are now engaging with suppliers at group level. Based on further research (including stakeholder reports, grievance procedures of third party suppliers and the IOI weekly alert system) we have identified a number of mills in our supply chain with reported issues. [...] These parent companies include, but are not limited to, Felda, KLK, Sime Darby, Wilmar, AAA and Genting. Since we have a direct relationship with these parent companies, we will engage with them directly to resolve the reported issues.

INTRODUCTION: THE HUMAN AND ENVIRONMENTAL COST OF PALM OIL EXPANSION

3

IOI under fire

IOI is a grower, processor and trader of both its own and third-party palm oil products

IOI Group subsidiaries

From forest to fork – the palm oil supply chain

POLICY VIOLATIONS IN IOI'S THIRD-PARTY SUPPLY CHAIN

10

AUSTINDO NUSANTARA JAYA

11

Violations of IOI policy

Links to IOI

Group overview

Plantations and mills

Environmental position

Certification and transparency

CASE STUDY: PERMATA PUTERA MANDIRI AND PUTERA MANUNGA PERKASA

13

Policy violation

Mapping analysis from Kepo Hutan and Global Forest Watch

Deforestation

Peat

Exploitation

IOI statement

Trader statements

Company statement

EAGLE HIGH/RAJAWALI

15

Violations of IOI policy

Links to IOI

Group overview

Plantations and mills

Environmental position

Certification and transparency

CASE STUDY: ARRTU ENERGIE RESOURCES

18

Policy violation

Mapping analysis from Kepo Hutan and Global Forest Watch

CASE STUDY: TANDAN SAWITA PAPUA

20

Policy violations

Deforestation

Child labour

Exploitation/ mistreatment of workers

Excessive use of force and use of state security forces

FPIC

CASE STUDY: VARIA MITRA ANDALAN

21

Policy violation

Deforestation

FPIC

IOI statement

Trader statements

Company statement

GOODHOPE/CARSON CUMBERBATCH

22

Violations of IOI policy

Links to IOI

Group overview

Plantations and mills

Environmental position

Certification and transparency

CASE STUDY: NABIRE BARU

24

Policy violations

Mapping analysis from Kepo Hutan and Global Forest Watch

Deforestation

Peat

Permit irregularities including lack of Environmental Impact Assessment

FPIC

Excessive use of force including use of state security forces

RSPO complaint

IOI statement

Trader statements

Company statement

INDOFOOD/SALIM GROUP

29

Violations of IOI policy

Links to IOI

Group overview

Plantations and mills

Environmental position

Certification and transparency

RSPO certification

CASE STUDY: ISUY MAKMUR/KEDANG MAKMUR

31

Policy violation

Mapping analysis from Kepo Hutan and Global Forest Watch

Deforestation

CASE STUDY: LONSUM CONCESSIONS IN NORTH SUMATRA

31

Policy violation

Exploitation/mistreatment of workers and child labour

IOI statement

Trader statements

Company statement

KORINDO

33

Violations of IOI policy

Links to IOI

Group overview

Plantations and mills

Environmental position

CASE STUDY: DONGIN PRABHAWA

36

Policy violation

Deforestation

Apparent deliberate use of fire

CASE STUDY: PAPUA AGRO LESTARI

37

Policy violation

Mapping analysis from Kepo Hutan and Global Forest Watch

Deforestation

Apparent deliberate use of fire

IOI statement

Trader statements

Company statement

TH PLANTATIONS/LEMBAGA TABUNG HAJI

39

Violations of IOI policy

Links to IOI

Plantations

Environmental position

CASE STUDY: PERSADA KENCANA PRIMA

41

Policy violation

Mapping analysis from Kepo Hutan and Global Forest Watch

Peat

IOI statement

Trader statements

Company statement

CONCLUSION: TIME FOR PALM OIL TRADER ACTION ON THIRD-PARTY SUPPLIERS

43

DEMANDS

REFERENCES

ACRONYMS

METHODOLOGY

MAPPING ANALYSIS

REFERENCES



20 September 2015, West Kalimantan:
1°18'8.273"S 110°3'54.004"E

A villager walks through the burning remains of recently cleared peatland orang-utan habitat. The area, which is covered by the government moratorium on new permits for development on primary forest or peatland, is located next to the Gunung Palung National Park in Keyong Utara, West Kalimantan.

©Ifansasti/Greenpeace

INTRODUCTION: THE HUMAN AND ENVIRONMENTAL COST OF PALM OIL EXPANSION

Over the last two decades, the plantation sector has laid waste to Indonesia's forests and peatlands. Millions of hectares have been destroyed for pulp and oil palm concessions at great cost to wildlife, the climate and people. A Harvard and Columbia University study out this month estimates that in 2015 alone, more than 100,000 adults in the region died prematurely as a result of the pollution from the haze of burning forests and peatlands.¹ Who knows how many have died since these fires started to plague the region 20 years ago? The financial toll has also been enormous. The World Bank estimates the cost of the 2015 fires to Indonesia at US\$16 billion – twice the estimated value added from Indonesia's 2014 gross palm oil exports – and admits that 'adding in regional and global costs mean the actual figure is much higher'.²

But who is to blame?

And who has the power to deliver change?

Greenpeace analysis shows that in the key palm oil production provinces of Riau and West Kalimantan, around half the recorded 2015 fire hotspots were in identified pulp or oil palm concessions.³ In the frontier region of North Kalimantan, 48% were in oil palm concessions alone.⁴

Clearly, palm oil companies have something to answer for, be their liability criminal or simply moral. After all, it is the wholesale clearance and drainage of peatlands that establishes the conditions in which these fires thrive, regardless of who or what sparks the flame.

IOI under fire

Greenpeace International first raised issues with Malaysian palm oil company IOI Group's plantations in Kalimantan in 2008, highlighting deforestation and drainage of peatland and clearance of forested orang-utan habitat.⁵ Over the following years, IOI produced a string of commitments to protect peatland and forest,⁶ including an August 2014 statement from CEO Dato Lee that '[IOI Group's] commitment to halt clearance of peat land and potential HCS areas applies to all [...] active concessions',⁷ but investigations continued to show breaches of the group's policy commitment.⁸ IOI's downstream and trading subsidiary, IOI Loders Croklaan, adopted a sustainable palm oil/'no deforestation' sourcing policy in November 2014;⁹ IOI Group created its own policy in December 2014, revising it again in July 2016.¹⁰ All of these policies are supposed to apply to third-party suppliers.

In March 2016, the complaints panel of the Roundtable on Sustainable Palm Oil (RSPO) upheld a complaint from Dutch nonprofit consultancy Aidenvironment regarding clearance of high conservation value (HCV) forests and forested peatland in IOI's concessions in Ketapang, West Kalimantan, and failure to obtain

proper licenses and permits from the Indonesian authorities. The RSPO suspension came into effect in April.¹¹

However, following a perfunctory paper exercise, the complaints panel elected to lift IOI's suspension in August¹² without evidence of any meaningful action to address the problems in IOI's Ketapang concessions. Greenpeace visited IOI's Ketapang concessions on several occasions in 2016, including September 2016, and saw only limited efforts in focus areas that left the real problems unaddressed. As Greenpeace informed IOI CEO Dato Lee prior to publication of this report, erecting a fire monitoring tower will not protect or restore high conservation value peat forest that has already been burnt as a result of inadequate management. Significant investment of time and resources – along with a commitment to change driven from the very top of the company – is still needed if IOI is to have any chance of undoing the damage done to the Ketapang peat landscape.

The 'Sustainable Palm Oil Policy'¹³ that IOI Group adopted in the wake of the RSPO suspension falls short of the commitments we expect from responsible palm oil producers and traders. The policy and IOI's implementation plan¹⁴ fail to resolve or adequately mitigate the risks of deforestation, peatland drainage, fires and human rights abuses in IOI's supply chain.

Beyond the paper policy is IOI's failure to ensure adherence to its sustainability policies either in its own operations – eg its continued failure to respect the customary rights of the Long Teran Kanan communities in Sarawak, East Malaysia, whose complaint remains unresolved after almost six years¹⁵ – or, as this report exposes, in those of its third-party suppliers. Importantly, the policy does not include a comprehensive plan to ensure IOI's third-party suppliers have stopped clearing rainforests and peatlands.

IOI is one of the leading traders of palm oil to the international market. In 2015, IOI traded and/or processed 1,527,696 tonnes of palm oil and palm oil-derived products,¹⁶ but only 38% of IOI Loders Croklaan's volumes came from IOI's own mills in Indonesia and Malaysia.¹⁷ The company states that the majority of the 800 mills in the supply base of IOI Loders Croklaan are indirectly sourced,¹⁸ meaning they are supplied by third parties sourced through other palm oil traders (including Golden Agri-Resources, Musim Mas and Wilmar International).

IOI Loders Croklaan's sustainable palm oil policy has always explicitly covered its suppliers of palm oil, palm oil fractions and palm kernel oil (PKO),¹⁹ and the company has described itself as engaging third-party suppliers who have committed to ensuring compliance.²⁰

However, analysis by Greenpeace of IOI Loders Croklaan's traceability data published on its dashboard, best available



22 February 2014, PT Bumi Sawit Sejahtera:
2°54'6.75"S 110°48'21.24"E
 Fire burns beside a canal extending outside the boundary of IOI's oil palm concession in Ketapang, West Kalimantan. © Aidenvironment

17 April 2016, PT Bumi Sawit Sejahtera:
2° 55' 55.686" S 110° 44' 41.496" E
 Drone footage reveals the impact of repeated fires on peat forest near IOI's oil palm concession in Ketapang, West Kalimantan. © Greenpeace

17 April 2016, PT Bumi Sawit Sejahtera:
2°47'57.5"S 110°54'36.2"E
 A Greenpeace investigator logs his GPS position beside a canal cutting through a peatland area identified as containing High Carbon Stock within the IOI's oil palm concession in Ketapang, West Kalimantan. © Ifansasti/Greenpeace

16 May 2016, PT Bumi Sawit Sejahtera:
2°55'13.1"S 110°43'46.9"E
 An oil palm sapling brushes against the charred remains of a tree in the IOI's oil palm concession in Ketapang, West Kalimantan. The area, which suffered extensive fires in 2015, was subsequently planted. Landsat analysis shows that the area, which borders a company-identified No Go area of peatland, was cleared after mid-2014.
 © Ifansasti/Greenpeace

3 December 2015, West Kalimantan:
2° 53' 46.23" S 110° 40' 9.33" E
 Fires in forest between two IOI oil palm concessions – PT Berkat Nabati Sejahtera and PT Bumi Sawit Sejahtera – in the Ketapang Peat Landscape. ©Ifansasti/Greenpeace





concession maps and deforestation alerts accessible via Greenpeace's online 'Kepo Hutan' platform, NASA fire hotspot data, published reports and official RSPO complaints suggests that the IOI Group continues to buy palm oil from third-party suppliers linked to serious environmental destruction and human rights abuses.

Apparent policy violations by groups in the IOI Loders Croklaan's most recent published list²¹ of palm oil suppliers include:

- **Clearance of forest** – including primary forest, high carbon stock (HCS) areas and areas of high conservation value – in Papua (Austindo Nusantara Jaya, Eagle High, Goodhope, Korindo) and Kalimantan (Eagle High, Indofood, TH Plantations)
- **Development on peatland** (Eagle High, Goodhope, TH Plantations)
- **Extensive uncontrolled fires** (Eagle High, Indofood, Korindo), including evidence of deliberate use of fire in land clearing (Korindo)
- **Exploitation of workers**, including allegations of **child labour** (Eagle High, Indofood)
- **Human rights abuses**, including developing land without the proper free, prior and informed consent (**FPIC**) of the local community (Austindo Nusantara Jaya, Goodhope) and **excessive force** including **use of state security forces** (Eagle High, Goodhope)

Traceability data from IOI Loders Croklaan show that palm oil from these third-party suppliers reached its refineries in Asia, Europe and North America between Q2 2015 and Q1 2016.²² Consumer goods companies²³ such as Nestle, Mars and Unilever²⁴ only dropped or suspended IOI Loders Croklaan as a supplier of palm oil or palm-based products following the RSPO suspension, despite IOI's 'no deforestation' commitments that 'go beyond' RSPO criteria.²⁵ Given that those same consumer companies continue to buy from Wilmar, Golden Agri-Resources (GAR) and Musim Mas – the third-party traders connecting IOI to several of the problematic groups identified in this report

– it is clear that palm oil linked to deforestation, peatland degradation, social conflict and worker exploitation has continued to flow into the consumer market.

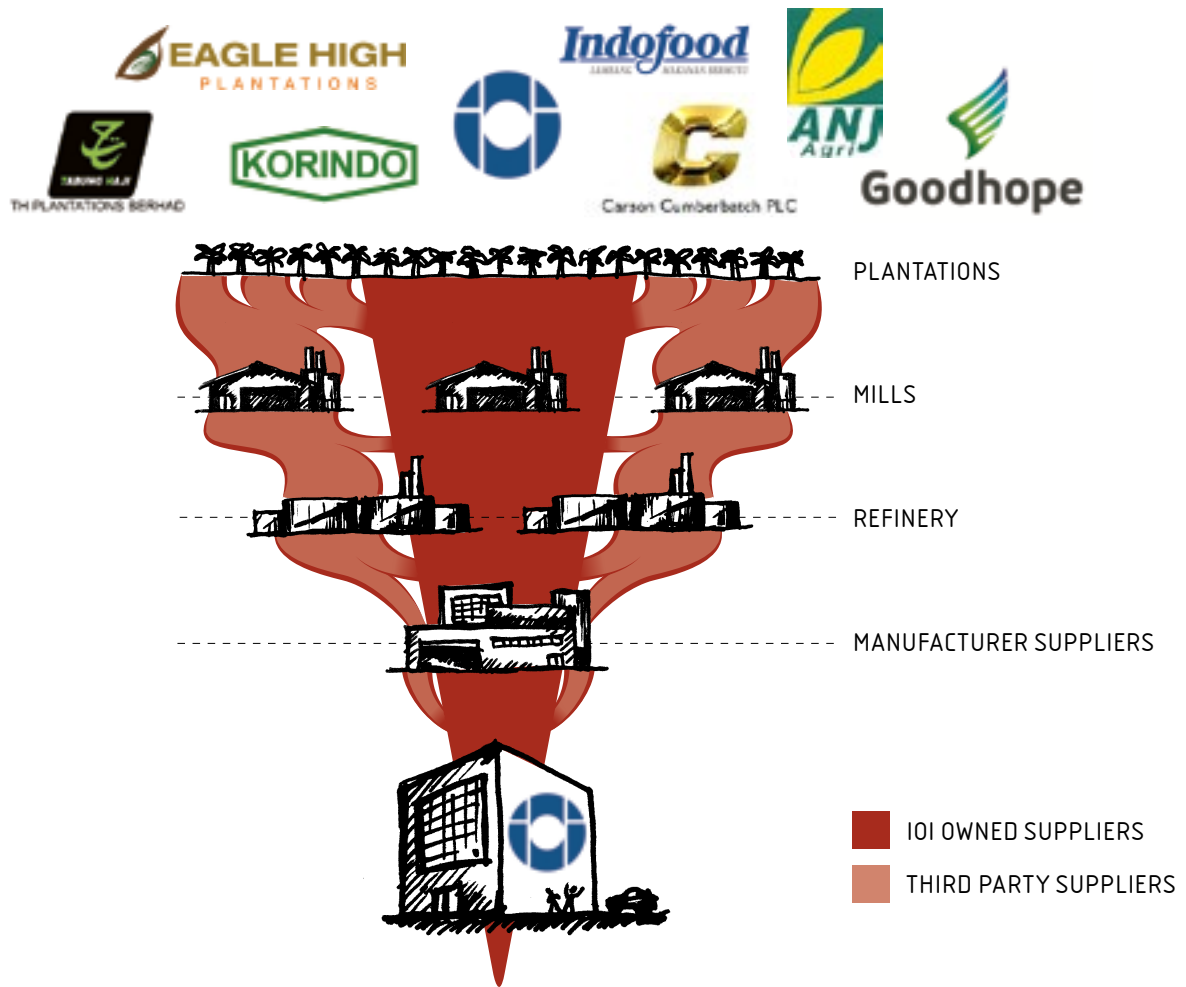
For this report, Greenpeace relied upon information in the public domain. Greenpeace contacted IOI before publication to seek confirmation of its findings. IOI Group should already have been well aware of the violations documented in the report. In some cases, published allegations of wrongdoing by the supplier group were first made more than five years ago and remain unresolved. Other allegations were made as recently as April 2016. However, in each instance IOI either is still sourcing from the group at the time of publication of this report or has only stopped sourcing as a result of decisions made by third-party traders when the violations were put to them publicly by a non-governmental organization (NGO). IOI's response to the report findings is symptomatic of its continued complacency in the face of grave evidence of serious environmental problems and human rights abuses in its palm oil supply chains:²⁶

'IOI group does not source directly from the Korindo group, Goodhope, Indofood, Eagle High and Austindo Nusantara Jaya. However, some of our third party suppliers (other refiners) have sourced from these companies in the past or are still sourcing from them. We have contacted these third party suppliers and requested them to engage with Goodhope, Indofood, Eagle High and Austindo Nusantara Jaya to address these allegations.'

The problems identified in this report are not limited to IOI's palm oil supply. Similar issues can no doubt be found in all other traders' supply chains. Indeed, as IOI's response to the evidence in this report emphasises, in several instances IOI was supplied with palm oil from non-compliant suppliers by another trader, such as Wilmar International, Musim Mas or Golden Agri-Resources. These companies have their own 'no deforestation' policies and are working with partner organisations to implement them. But for all the good work that is being done, there remains a systemic failure to do the basics: to identify and exclude non-compliant suppliers. The day when major palm oil traders can state with conviction that their palm oil is not linked to deforestation, peatland destruction or human rights abuses is still a long way off.

IOI'S GLOBAL PALM OIL TRADE





IOI is a grower, processor and trader of both its own and third-party palm oil products

Headquartered in Malaysia, IOI is reportedly the world's third-largest palm oil company.²⁷ It is a vertically integrated company that manages palm oil plantations; processes fresh fruit bunches (FFB) from both its own plantations and those of other companies into crude palm oil (CPO) and palm kernel oil; and manufactures palm oil derivatives, specialty ingredients and oleochemicals. It trades its palm oil and derivatives around the world. IOI Loders Croklaan is a downstream subsidiary.

Just as IOI Group sources FFB from third-party suppliers in addition to its own plantations, its major subsidiary IOI Loders Croklaan sources from IOI mills and directly from third-party suppliers, who in turn can source palm oil from other suppliers.²⁸ In 2015, IOI Group purchased 6,362 tonnes of FFB from third-party suppliers, of a total of 3,587,264 tonnes of FFB that it processed.²⁹ However, at year end 2015, IOI Loders Croklaan was sourcing 62% of all of its palm oil volumes from mills not owned or managed by IOI.³⁰ So while IOI sources most of its FFB from its own plantations, most of its downstream volumes that end up in both domestic and global markets are sourced via third-party suppliers.

IOI Group owns four refineries: three in Asia (Sabah and Johor, Malaysia) and one in Rotterdam, Netherlands.³¹

Downstream subsidiary IOI Loders Croklaan also owns refineries in Channahon, Illinois, United States; Wormerveer, Netherlands; and Rexdale, Ontario, Canada.³² The Group also operates manufacturing sites globally.

IOI Loders Croklaan operates some of the largest palm refining and processing plants in the world. The company claims that the four refineries in Asia and Rotterdam have a combined annual refining capacity of 3,3 megatonnes (Mt); the Rotterdam complex has a capacity of 1.2Mt.³³ IOI Group claims that its Channahon refinery, with a capacity of 450,000t per year,³⁴ is the largest palm oil processing complex in the western hemisphere.³⁵

From October 2014 through October 2015, IOI and its subsidiaries sold 6.88% of the palm oil that was imported into the United States, and IOI Loders Croklaan was responsible for importing 5.99% of the oil into the US market (this is similar to the market share of Musim Mas, which sold 5.40% of the oil brought into the US market in the same time period).³⁶ However, IOI Loders Croklaan's market share may be even higher as its traceability data indicates that it purchases some of its oil from Victory Tropical Oils, GAR's US subsidiary. Refineries may not always run at full capacity due to shifting supply of palm oil; however, given the scale of recent investments in the Rotterdam and Channahon complexes, the company is likely to seek additional palm oil volumes and customers to preserve its investments.

IOI Group subsidiaries

IOI Group's downstream arm handles manufacturing and marketing of bulk oils and proprietary functional ingredients to the food and personal care industry (via IOI Loders Croklaan BV, which has its own subsidiary, IOI Loders Croklaan USA). Oleochemical production and marketing is handled by subsidiary IOI Oleochemical Industries Bhd (IOI Oleo) and its three subsidiaries, Acidchem International Sdn Bhd, Derichem Sdn Bhd and Esterchem Sdn Bhd. It appears that IOI's oleochemical subsidiaries produce oleochemicals entirely from palm products, but the specialty oils and fats subsidiaries and sub-segments incorporate other edible oils.³⁷ IOI's website, product brochures³⁸ and press releases reveal that these oils include cottonseed, soya bean, rapeseed, coconut,³⁹ sal, illipe and shea.⁴⁰

IOI Oleo has an office and manufacturing facility in Johor, Malaysia, and all three of its subsidiaries have a shared manufacturing facility and office in Prai, Penang, Malaysia. IOI Oleo's principal activities include the manufacture and sale of fatty acids, glycerine, soap noodles and fatty esters to personal care industry customers such as Davlyn Industries, which manufactures Shiseido skincare products in the United States.⁴¹ IOI Oleo products are exported to more than 65 countries worldwide.⁴² In 2015 IOI Oleo acquired Cremer Oleo GmbH & Co's oleochemical business, becoming IOI Oleo GmbH and now operating three production facilities in Germany.⁴³

IOI Loders Croklaan BV, headquartered in Hogeweg, Netherlands, sells bulk palm oil and palm products and develops, markets and produces functional trade ingredients and custom formulations for the food and personal care industry. The company has three sales organizations (Europe, Americas, Asia), each with further divisions into Specialties, Bulk Edible Oils and Marketing. IOI Loders Croklaan has a robust research and development unit, where food scientists from client companies can develop new ingredients alongside Loders Croklaan staff. It has developed specifically branded products to appeal to customers seeking transfat-free oils following the Food and Drug Administration's (FDA's) ban on partially hydrogenated oils (PHOs).

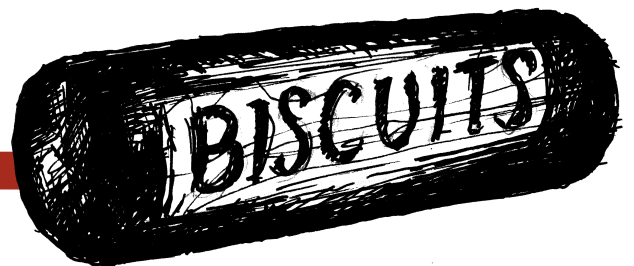
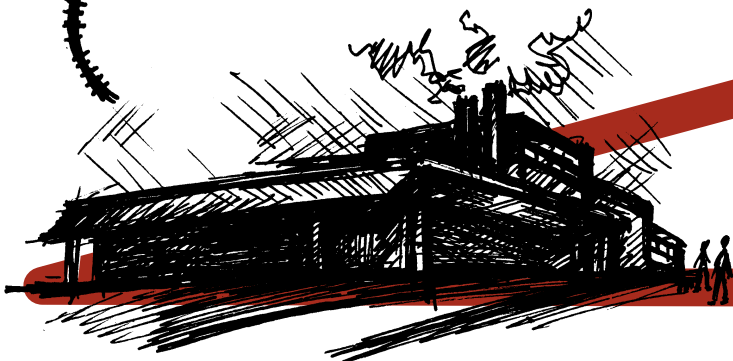
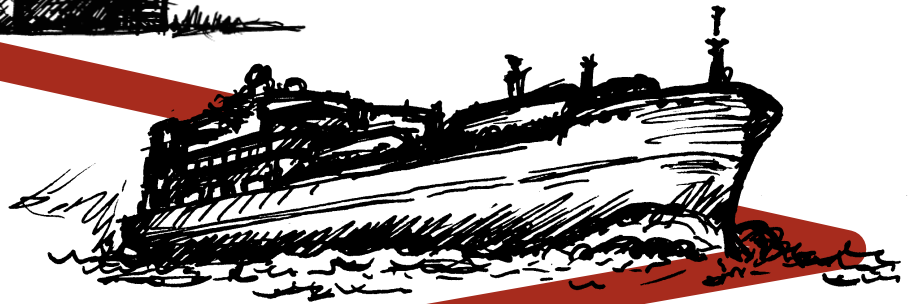
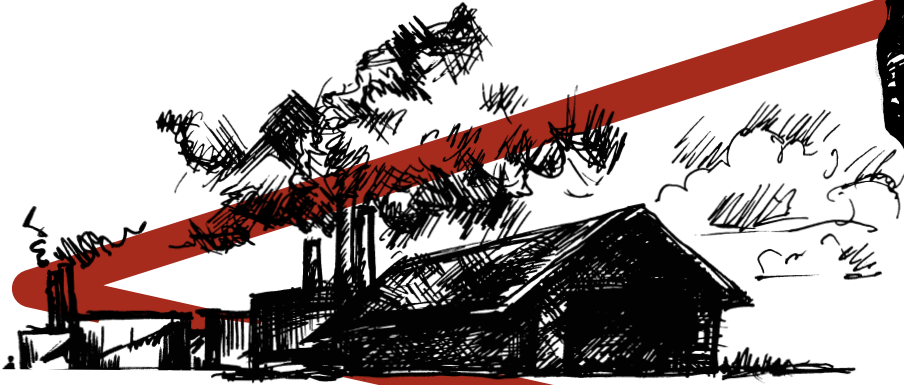
IOI Loders Croklaan also holds a patent for, and appears to be the only producer of, Betapol(R), a human breast milk substitute used in infant milk formulas.

From forest to fork – the palm oil supply chain

Fresh fruit bunches are harvested at the plantation by hand with long knives. The FFB leave the plantation via truck and go to a mill within 50 km. At the mill, the fruit is crushed and turned into crude palm oil. Then it is transported to a refinery. Refining is the process of turning crude palm oil into refined palm oil and products (olein, stearin), and manufacturing is the processing of turning refined palm oil into oleochemicals and specialty products (specialty food ingredients, soap noodles, etc.).

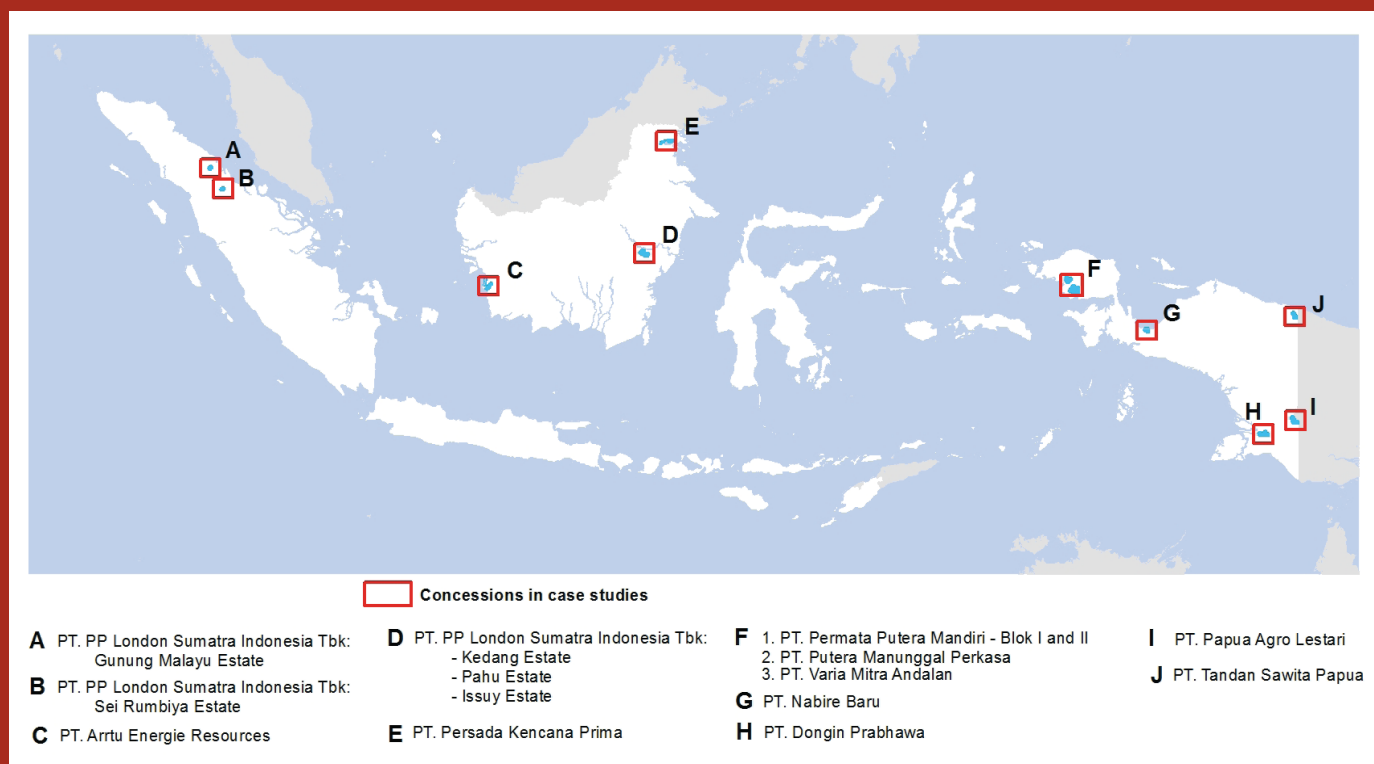
The refined, bleached and deodorised (RBD) palm oil can be packaged in these facilities in drums, flexitanks/isotanks or – most commonly – bulk chemical tankers. Palm products that are hard (wax, palm stearin) can be packaged in cartons, and palm products that are soft (palm olein) can be packaged in jerry cans (for cooking oil in China, India, Africa and South America as well as specialty stores in the US).

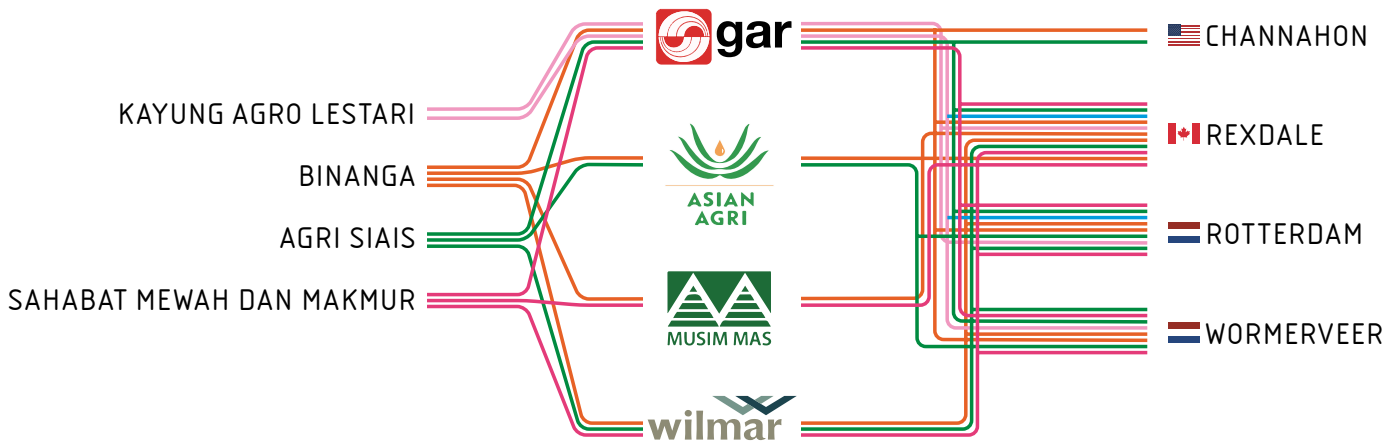
After arriving in the import country, the product is then blended and processed into further ingredients. Sometimes this is done by the trader's downstream partner, and sometimes there is a distributor involved that will blend, refine or both. The end result is transported by truck or train to the consumer brand customer to be made into cupcake frosting, packaged cookies, face lotion and a wide array of other products.



POLICY VIOLATIONS IN IOI'S THIRD-PARTY SUPPLY CHAIN

CASE STUDIES





IOI's Sustainability Policy

All provisions in this policy apply to all third-party suppliers in our supply chain.

- Ensure no deforestation of high conservation value (HCV) areas and high carbon stock (HCS) areas.
- Protect peat areas regardless of depth in new developments.
- Eliminate all forms of forced and child labour.
- Respect the right of indigenous and local communities to give their Free, Prior and Informed Consent (FPIC) to operations on lands over which they hold legal, communal or customary rights.



Dato' Lee Yeow Chor
IOI CEO

Revised December 15 2014



Austindo Nusantara Jaya (ANJ) is an Indonesian family-owned company whose main interest is palm oil plantations, with developing interests in biogas, geothermal energy and sago plantations in Papua.

Violations of IOI policy

- **Deforestation:** destruction of primary forest in Papua (PT Permata Putera Mandiri and PT Putera Manunggal Perkasa, West Papua)

- **Exploitation:** land disputes, absence of free, prior and informed consent by local communities (PT Permata Putera Mandiri and PT Putera Manunggal Perkasa, West Papua)

Links to IOI

In the period from Q2 2015 through Q1 2016, IOI Lodgers Croklaan purchased palm oil or palm kernel oil from the following ANJ mills for all four of its refineries in the Americas and the Netherlands (not all CPO or palm products from each mill or trader went into each IOI Lodgers Croklaan refinery):⁴⁴

- Binanga (via AAA/APICAL, GAR, ICOF (Inter-Continental Oils and Fats)/Musim Mas, Victory Tropical Oil/GAR, Wilmar)
- PT Austindo Nusantara Jaya Agri Siais (via AAA/APICAL , GAR, Victory Tropical Oil/GAR, Wilmar)
- Kayung Agro Lestari (via GAR)
- Sahabat Mewah Dan Makmur (via GAR, ICOF/ Musim Mas, Wilmar)

Emails to Greenpeace from GAR, Musim Mas and Wilmar confirm that they halted purchasing from ANJ in 2015.

Group overview

Company: **PT Austindo Nusantara Jaya Tbk**

Group: **PT Austindo Nusantara Jaya Tbk**

Headquarters: **Indonesia**

Stocklisted: **Indonesia Stock Exchange**

RSPO member: **Yes⁴⁵**

As of 31 December 2015, 90% of shares were controlled by various members of the the Tahija family.⁴⁶

‘According to the letter from the Minister of Agraria and Spatial Planning to GAPKI of 8 September 2016, which was based on the Act No 14/2008 on the Public Information Disclosure and National Land Agency Regulation No 6/2013, not all documents can be made public. Even so, we truly believe in the spirit of engagement as a means to build better understanding and, therefore, welcome information requests from relevant parties seeking clarification from us. This is, however, ruled by conditions requesting that the information provided is not misused for ulterior motives nor deliberately misinterpreted, placing the company in a financial disadvantage. In such cases, information requests can be deemed as corporate espionage.’

ANJ response to Greenpeace inquiries, 23 September 2016

Plantations and mills

The group owns four mature plantations: two in North Sumatra (operated by PT Austindo Nusantara Jaya Agri and PT Austindo Nusantara Jaya Agri Siais), and one each in Belitung (PT Sahabat Mewah dan Makmur) and West Kalimantan (PT Kayung Agro Lestari). Planting has also commenced on two plantations in West Papua province (PT Permata Putera Mandiri and PT Putera Manunggal Perkasa) and one in South Sumatra (PT Galempa Sejahtera Bersama), but these plantations are not yet in production.⁴⁷ The company also owns a third Papuan concession – PT Pusaka Agro Makmur, which remains undeveloped and was formally merged with the parent company in 2015⁴⁸ – and holds minority 20% stakes in four other Sumatran plantation concessions.

Austindo Nusantara Jaya produced 192,891 tonnes of CPO in 2015.⁴⁹

Near its Papuan oil palm concessions, a subsidiary called PT Austindo Nusantara Jaya Agri Papua has built a sago mill in which it intends to process sago starch from 40,000 hectares (ha) of sago forest. Another subsidiary, PT Gading Mas Indonesia Teguh, cultivates tobacco and more recently edamame in East Java.⁵⁰

Environmental position

ANJ does not have a public policy to avoid development on forested areas or peatland. In its 2015 Annual Report it specifically addresses the issue of developing plantations on the island of Papua, which is almost entirely forested, suggesting that a different approach is needed there and claiming to have developed a sustainable socio-economic framework that balances rural development with conservation of natural resources, including HCV and HCS areas:

‘Specifically, we are committed to conserving a minimum of 30% of the legally allocated land for development in West Papua.’⁵¹ This falls far short of a public no deforestation policy.

Certification and transparency

ANJ is a member of the RSPO and has obtained certification for its three Sumatran plantations. Although in general it is an active RSPO member, both PT Permata Putera Mandiri and PT Putera Manunggal Perkasa started clearing forest in Papua in 2013/2014 before announcing this new planting on the RSPO’s website (a requirement for members as part of the New Planting Procedures).⁵² Indonesian NGO Greenomics produced a report highlighting this, and ANJ admitted it had infringed RSPO procedures and said it would stop work on the two plantations until the conditions of the New Planting Procedures were met.⁵³

ANJ hopes to achieve RSPO certification for its remaining productive plantation in Kalimantan in 2016 and full certification for all plantations, including its Papuan plantations, by 2022.⁵⁴

ANJ has submitted required information to the RSPO through its Annual Communications of Progress (ACOP) report.⁵⁵

CASE STUDY: PERMATA PUTERA MANDIRI AND PUTERA MANUNGGAL PERKASA

Concession names: PT Permata Putera Mandiri,

PT Putera Manunggal Perkasa

Location: West Papua

Policy violation

- Extensive clearance of primary forest and exploitation of local communities, including failure to conduct a proper FPIC process, place Austindo Nusantara Jaya in violation of IOI's policy.

Mapping analysis from Kepo Hutan and Global Forest Watch

- Ministry of Environment and Forestry (MoEF) landcover maps available through Kepo Hutan show that all three of ANJ's Papuan concessions were almost entirely covered with forest in 2012, the majority being classified as primary forest and primary swamp forest.
- More than half of PT Permata Putera Mandiri and PT Putera Manunggal Perkasa's concessions were classified as Intact Forest Landscapes in 2013,⁵⁶ meaning they have a particular conservation importance which would be disturbed by even partial plantation development.

Deforestation

ANJ's three Papuan concessions encompass an area of 88,086 hectares (PT Permata Putera Mandiri 34,147ha, PT Putera Manunggal Perkasa 23,424ha⁵⁷ and PT Pusaka Agro Makmur 30,515ha).⁵⁸ Clearance work started in the first two of these concessions in late 2013 or early 2014,⁵⁹ and according to the company, by the end of 2015 3,441 hectares had been planted across the two concessions.⁶⁰

Environmental groups have drawn attention to deforestation in PT Permata Putera Mandiri and PT Putera Manunggal Perkasa's concessions, directing their criticism at palm oil trading companies which buy from the ANJ Group.⁶¹ Responding to this criticism, ANJ said it had commissioned a new set of HCV assessments that 'will be used in the preparation of a comprehensive development plan for the

ANJ concessions to help ensure that those areas of forest deemed critical for regional biodiversity will as far as possible be conserved'.⁶²

These new HCV assessments were not available at the time of writing. HCV maps published with the New Planting Procedure notification showed that 5,051 hectares would be set aside in the PT Permata Putera Mandiri concession⁶³ and 3,788 hectares in PT Putera Manunggal Perkasa's concession.⁶⁴ Areas set aside for conservation included buffer zones along river banks, lakes and wetlands; an area of peat; an area of forest; sago groves which local people rely on for subsistence; and sacred cultural sites.

In August 2015, ANJ temporarily halted land clearing in its Papuan concessions, claiming that this step would cost the company US\$8.8 million due to terminated contracts.⁶⁵

Landsat satellite images show no clear evidence of resumed land clearing as of August 2016.⁶⁶ The company did, however, state its intention to continue planting at its West Papua plantations in its 2015 Annual Report.⁶⁷

Although ANJ has claimed that its decision to slow development in West Papua was the reason the company recorded a net loss in 2015, analysis by Chain Reaction Research indicates that loss of customers cost the company 10% of its revenue in Q4 2015 and projected that 35% of the company's revenue would be at risk in 2016.⁶⁸

Peat

PT Permata Putera Mandiri's HCV assessment indicates that peat soils are present within the eastern part of the concession, which mostly consists of swamp forest. 2,661 hectares have been set aside as an HCV area.⁶⁹

Large parts of both concessions border on areas of peat, so drainage for plantations risks damaging the wider peat landscape.

Exploitation

Since work started in ANJ's two Papuan plantations in 2013/2014, a number of land disputes have emerged involving local indigenous groups. In March 2015, five clans from Saga village blocked access to the company's work site, claiming that the company was clearing their customary land without obtaining their permission or giving compensation.⁷⁰

In 2015 the Gue clan from Puragi village brought a case against PT Permata Putera Mandiri in the Sorong District Court for material losses of 6.6 trillion Rupiah (US\$503 million). The Gue clan

'We are aware of the global market requirements of No Deforestation, No Peatland and No Exploitation principles, and we conform to these principles.'

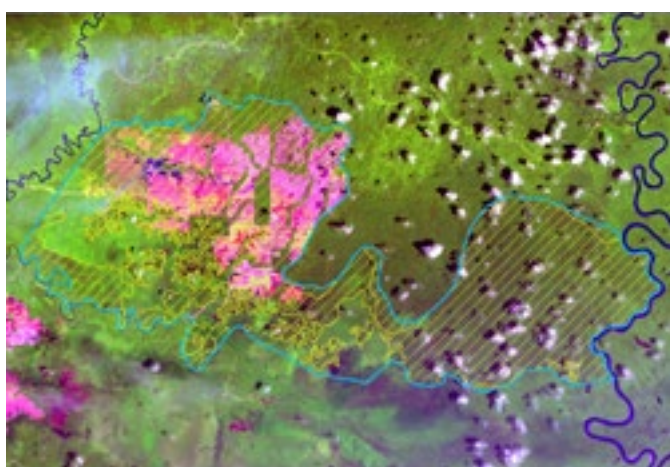
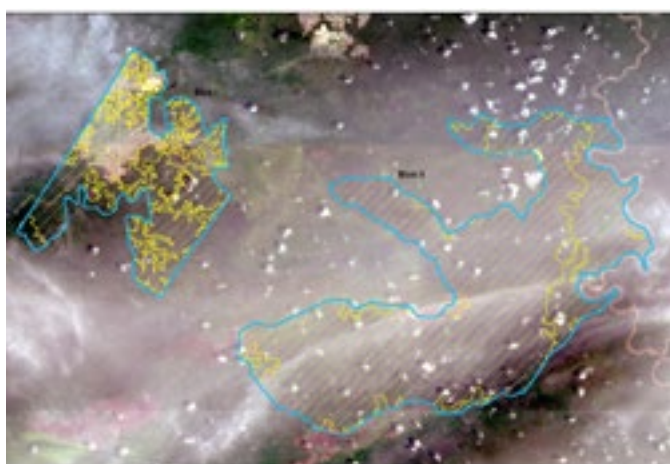
ANJ response to Greenpeace inquiries, 23 September 2016

25 August 2016,
PT Putera Manunggal Perkasa.
©Yayasan Pusaka



alleged that land cleared by the company belonged to them, and the company had not paid them for damage to watersheds, water sources running dry, loss of sacred sites, damage to sago groves and hunting grounds, and loss of livelihood.⁷¹ On 25 July 2016 the District Court judges declared that the case was inadmissible,⁷² meaning that although the company was not found to be legally liable, the dispute remains essentially unresolved.

Several demonstrations were held by community members opposed to PT Permata Putera Mandiri during 2015. Dozens of people were arrested in one action which took place on 15 May 2015,⁷³ and two men were subsequently imprisoned for five and



Map:
 ● Forest cover 2013
 ● Forest cover 2011
 ○ Concession boundary
 Background satellite images
 are Landsat 8

seven months for property damage. Separately, two village leaders from the Benawa and Anuni villages were reportedly arrested after protests opposing PT Putera Manunggal Perkasa and held in police detention awaiting trial for at least eight months.⁷⁴

PT Putera Manunggal Perkasa is also facing opposition from the Wetaku, Sowe and Woraït clans, who reportedly withheld their consent as customary landowners in December 2015.⁷⁵

ANJ claims to implement a free, prior and informed consent process when dealing with local communities,⁷⁶ but the number of disputes which have emerged suggests that steps taken before planting started were insufficient.

Statements in ANJ's 2015 Annual Report indicate that as part of its decision to slow down its Papua projects it intends to reappraise its approach to local indigenous communities.⁷⁷ However, the company has not given any public notice that it intends to comprehensively renegotiate land access on an FPIC basis.

IOI statement

'[ANJ was] already reported in the list of grievances of our third party suppliers which is monitored by our sustainability department. We have also requested our third party suppliers for an update.'⁷⁸

Trader statements

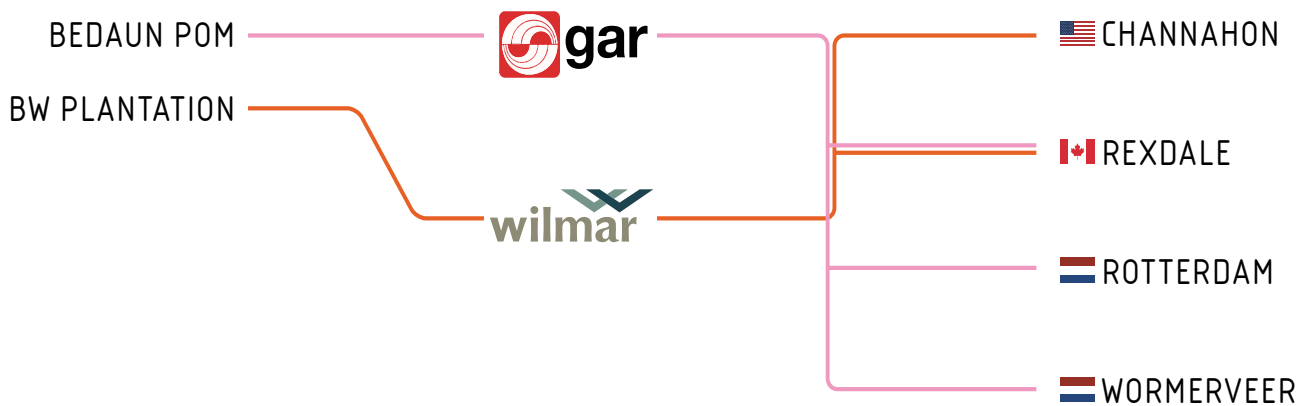
As a result of NGO pressure, ANJ buyers GAR and Wilmar reportedly suspended dealings with the company (in the case of GAR, pending further HCV and HCS surveys).⁷⁹ In an email to Greenpeace on 23 September, AAA/Apical replied with the general statement that 'Based on our records and preliminary investigations, Apical does not currently buy from any of the mills in the list you presented to us'⁸⁰ which suggests that the company is not proactively monitoring suppliers at group level; it later stated that 'Apical has no sourcing transaction with with ANJ at this point of time' but asked Greenpeace to share the name of the mill in order to investigate. In emails to Greenpeace on 20 September 2016, GAR, Musim Mas and Wilmar all confirmed that they had ceased trade with the company in 2015. According to Musim Mas, the suspension was due to ANJ showing 'no indication of willingness to go through the sustainability journey'.⁸¹

Company statement

Greenpeace contacted ANJ before publication to seek confirmation of its findings. The company confirmed that it had inadvertently cleared primary forest and instituted a 'self-moratorium' until a more detailed study could be performed.⁸² With regard to peatland, the company has commissioned an international consultant to perform a landscape study, identifying peatlands to be marked for conservation. No other details about the study or methodology were included.⁸³

The company did not acknowledge that the land acquisition of PT PPM and PT PMP fell short of FPIC standards only noting that the process will be 'ongoing' and that in addition to stakeholder meetings, it is engaging in a research study to identify economic development needs of West Papua.⁸⁴ The study will be made available to the RSPO after socialization. The FPIC assessments for PT PAM have been conducted and stakeholder meetings will continue. The company noted that in West Papua is a 'special development case' where it is attempting to 'balance conservation and economic development'.

With regard to transparency, ANJ referenced a letter from the Minister of Agraria and Spatial Planning sent to GAPKI on 8 September 2016, stating that not all documents can be made public.



IOI's Sustainability Policy

'All provisions in this policy apply to all third-party suppliers in our supply chain.

- Ensure no deforestation of high conservation value (HCV) areas and high carbon stock (HCS) areas.
- Protect peat areas regardless of depth in new developments.
- Observe zero-burning in all new planting and replanting of oil palm.
- Eliminate all forms of forced and child labour.
- Respect the right of indigenous and local communities to give their Free, Prior and Informed Consent (FPIC) to operations on lands over which they hold legal, communal or customary rights.



Dato' Lee Ychow Chor
IOICEO



Eagle High is the plantations arm of the Rajawali Group, an Indonesian conglomerate with interests including hotels, cement, consumer goods and transport.⁸⁵ Rajawali CEO Peter Sondakh is a friend of Malaysian prime minister Najib Razak and a former business associate of a son of Indonesian president Suharto.⁸⁶

Violations of IOI policy

- **Deforestation:** satellite deforestation alerts show forest loss since early 2015 (PT Arrtu Energie Resources, West Kalimantan; deforestation has also occurred in PT Varia Mitra Andalan, West Papua)
- **Peat:** concession development on peat (PT Arrtu Energie Resources, West Kalimantan)
- **Fires:** extensive fires raise questions about deliberate or

negligent mismanagement (PT Arrtu Energie Resources, West Kalimantan)

- **Exploitation:** excessive use of force, use of state security forces and child labour (PT Tandan Sawita Papua, Papua)

Links to IOI

Between Q2 2015 and Q1 2016, IOI Loders Croklaan purchased from Eagle High in Central Kalimantan, Indonesia via Wilmar (BW Plantation) for its Channahon and Rexdale refineries in the Americas, and via GAR (Bedaun Palm Oil Mill) for its refineries in Rotterdam and Wormerveer in the Netherlands.⁸⁷ During the same period, IOI Loders Croklaan also purchased from Rajawali-owned Jaya Mandiri Sukses in East Kalimantan via Wilmar and GAR for its refineries in the Americas and the Netherlands.⁸⁸

Group overview

Company: **PT Eagle High Plantations Tbk (previously known as PT BW Plantation Tbk)**

Headquarters: **Indonesia**

Stocklisted: **Indonesia Stock Exchange**

RSPO member: **Yes⁸⁹**

Plantations and mills

Jakarta-based PT Eagle High Plantations Tbk was established in 2000.⁹⁰ Eagle High is controlled by the Rajawali Group, which holds around 69% of the shares.⁹¹ Via BW Plantation Tbk, it has been a member of the RSPO since 2008.⁹² The company took on its current form in 2014 when PT BW Plantation Tbk took over Green Eagle Group, roughly tripling its land holdings.⁹³ Rajawali had previously controlled Green Eagle Group but had bought a 21.5% stake in BW, making the BW acquisition a reverse takeover.⁹⁴ There are currently plans for an investment unit of Malaysian conglomerate Felda to acquire a 37% stake in Eagle High, after a similar deal by Felda's international business arm Felda Global Ventures (FGV) was scrapped.⁹⁵

**24 February 2014,
PT Adhyaksa Dharma Satya:**

An excavator at work in a BW Plantation concession in Kotawaringin Timur, Central Kalimantan. BW Plantation is part of the Eagle High group.
©Ifansasti/Greenpeace



**20 September 2014, West Kalimantan:
1°37'20.21"S 110°3'29.65"E**

PT Arrtu Energie Resources: A Greenpeace investigator captures GPS coordinates beside the burning remains of recently cleared peatland orang-utan habitat.
©Ifansasti/Greenpeace





24 June 2013, PT Bumi Langgeng Perdanatrada:
 2°46'28.8"S 111°50'30.7"E
 A Greenpeace investigation team with FNPI documents orang-utan remains inside and adjoining a BW Plantation concession near Tanjung Puting National Park. BW Plantation is part of the Eagle High group.
 © Greenpeace



17 May 2009, Central Kalimantan:
 01°47'50.3"S 112°36'06.6"E
 A Bornean langur holds the hand of a villager in Kotawaringin Timur. Loss of habitat, for instance for plantations, is a chief threat to such wildlife.
 (c)Rante/Greenpeace

As of 2014, Eagle High controlled around 425,000ha in Kalimantan, Sulawesi, Papua and Sumatra,⁹⁶ with 153,250ha planted area in 2015, including 18,931ha of plasma (smallholdings).⁹⁷ Over 90% of the planted area is in Kalimantan.⁹⁸ The 2015 annual report lists 32 palm plantation subsidiaries, with 6 mills.⁹⁹

Eagle High's total production in 2015 was 1,418,270 tonnes FFB, 350,578 tonnes CPO and 60,236 tonnes PKO.¹⁰⁰

Eagle High has just obtained a US\$116 million bank loan to fund expansion in some of its subsidiaries, apparently not including the concessions in the case studies below.¹⁰¹

Environmental position

According to Eagle High's website: 'We commit to conducting rigorous Social and Environmental Impact Assessments and High Conservation Value assessments for all of our existing plantations and prior to commencing any new planting. [...] We further commit to High Carbon Stock studies for all new planting and will not develop on land identified as an HCS area. In early 2016 we have completed our first HCS study.'

It continues: 'we are shifting focus from the strong growth of our planted area in recent years to slower planting and we have halted land clearing. We will continue this policy in 2016 until the requirements for certification are met.'¹⁰²

It is not clear which concession or concessions the HCS study mentioned relates to, and it does not appear on the company website at the time of writing. Neither the 2015 Annual Report, the company website nor its entry on the RSPO website offers any more detail on forest policy, nor do any of these sources mention peatland or HCV areas. While the company has registered an HCS assessment with the High Carbon Stock Approach Steering Group, it lacks a public commitment to the HCS Approach methodology and toolkit for implementation.¹⁰³

Certification and transparency

Eagle High has been a member of the RSPO since 2008.¹⁰⁴

The company's 2015 Annual Communication of Progress (ACOP) report to the RSPO lists 49,975 hectares of its plantations as managed for conservation,¹⁰⁵ but the nature of these areas is not described.

The 2015 ACOP claims to sell through the Mass Balance supply chain,¹⁰⁶ but the company apparently had no certified plantations at the time this report was submitted.

According to its 2015 ACOP, Eagle High aims to have its first plantation RSPO certified in 2016¹⁰⁷ (this has slipped from 2014 in the 2013 ACOP report¹⁰⁸) and to achieve certification of all estates and mills by 2025¹⁰⁹ (this has also slipped, from 2018 in the 2013 report¹¹⁰). It aims to achieve 100% RSPO certification of associated smallholders and independently sourced FFB by 2029¹¹¹ (this has slipped from 2020 in the 2013 ACOP¹¹²).

In summary, Eagle High's commitment to meeting RSPO standards has gone backwards since 2013.

In terms of transparency, its 2015 ACOP was submitted to the RSPO¹¹³ but maps of concessions listed in this ACOP have been removed from RSPO website.

CASE STUDY: ARRTU ENERGIE RESOURCES

Concession name: **PT Arрту Energie Resources (2 concessions)**

Location: **Ketapang, West Kalimantan**

Policy violation

- **Deforestation and peatland development place Eagle High in violation of IOI's policy.**
- **Extensive fires raise questions about deliberate or negligent mismanagement.**

Mapping analysis from Kepo Hutan and Global Forest Watch

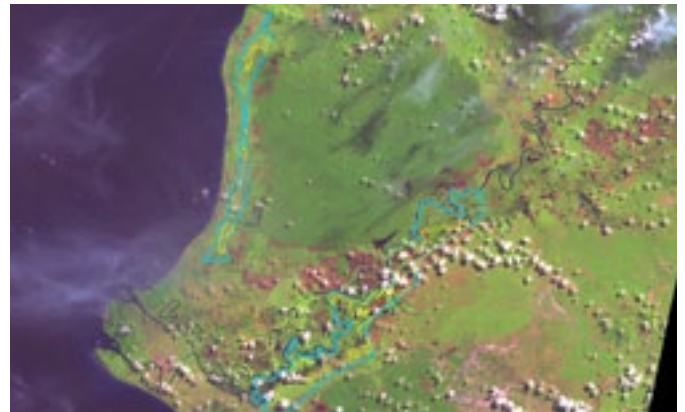
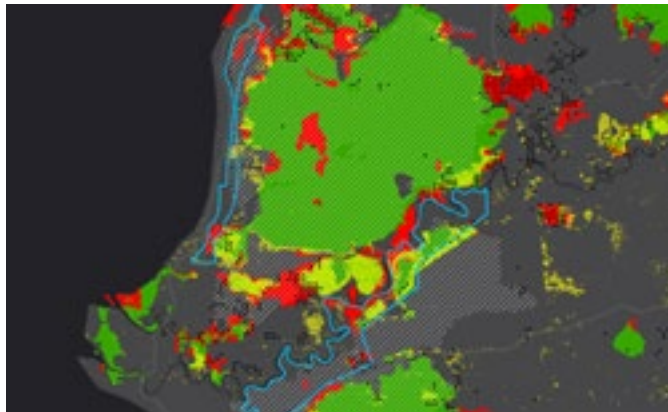
- MoEF landcover mapping shows forest loss in both concessions, mainly in the southern block, between 2011 and 2013, with a large area of forest remaining in the southern block in 2013.
- GLAD alerts show tree cover loss in these concessions since early 2015, accelerating in late 2015, including clearance on peat areas and loss of much of the forest that remained in 2013.
- The concessions include around 11,000 hectares of peat.
- The concessions saw over 60 fire hotspots in 2015, mostly on peat areas, including areas mapped as forest in 2013.

The two PT Arрту Energie Resources concessions are adjacent to Gunung Palung National Park in Ketapang, West Kalimantan – home to one of largest and densest populations of orang-utans in Borneo.¹¹⁴

In 2015, a Greenpeace investigation documented peatland fires burning unchecked in the Arрту Energie Resources concessions.¹¹⁵



Map:
 ● Forest cover 2013
 ● Forest cover 2011
 ○ Concession boundary
 ● Deforestation 2011-2013
 ● Peat
 ● GLAD alerts
 ● FORMA alerts
 Background satellite images
 are Landsat 8



20 September 2015,
PT Arrtu Energie Resources:
 Drone footage collects evidence of fires
 burning along access roads as new industrial
 development replaces remaining peatland
 orang-utan habitat in the Eagle High oil palm
 concession in Ketapang, West Kalimantan.
 © Greenpeace

CASE STUDY: TANDAN SAWITA PAPUA

Concession name: **PT Tandan Sawita Papua**
Location: **Keerom Regency, Jayapura, Papua**

Policy violation

- **Recent deforestation of primary forest, exploitation of workers including use of child labour, human rights abuses such as excessive use of force and use of state security forces and failure to follow a proper FPIC process place Eagle High in violation of IOI's policy.**

Deforestation

PT Tandan Sawit Papua's concession covers 18,337 hectares.¹¹⁶ 2009 MoEF landcover maps show the concession was almost entirely covered with a mixture of primary and secondary forest.¹¹⁷ The conservation value is likely to have been significant: a 2010 wildlife survey in PT Tandan Sawita Papua's concession discovered that 8 rare or protected mammal species were present (including two species of critically endangered cuscus), as well as 39 rare or protected birds and 3 reptile species.¹¹⁸

PT Tandan Sawita Papua had cleared most of the forest in the concession by the end of 2014.¹¹⁹ Much of the remaining forested area has been set aside for conservation based on the 2012 HCV assessment,¹²⁰ or was not appropriate for cultivation.

Child labour

It has been reported that children as young as six work in the plantation to support their parents.¹²¹ As a member of the UN Global Compact, PT Tandan Sawita Papua has stated a commitment to abolish child labour, but its measures intended to achieve this aim were limited to advising workers not to bring children to work and providing some educational support.¹²²

Exploitation/mistreatment of workers

In September 2013, PT Tandan Sawita Papua reportedly sacked four casual labourers after they took strike action in protest at the way the company had allegedly doubled the daily targets for workers without permanent contracts, resulting in unmanageable workloads.¹²³

In April 2014 two employees were imprisoned after demanding better working conditions. The two men were reportedly summoned to the police station, where they were held for around two weeks until agreeing to sign statements accepting dismissal from the company and agreeing not to make further demands.¹²⁴

Excessive use of force and use of state security forces

Since PT Tandan Sawita Papua started operations there have been a number of reported incidents that suggest repressive treatment of company workers. The most serious of these was the fatal shooting of a 22-year-old company employee, Marvel Doga, by the state security forces in the early hours of 21 December 2015 as he was demanding his unpaid holiday allowance.¹²⁵ Beyond the apparent excessive use of force, the incident raises questions about why the state security forces were on call to protect the plantation, tasked with guarding the management office.

FPIC

Several reports allege that PT Tandan Sawita Papua did not engage the whole indigenous community in an inclusive FPIC process, but merely negotiated land rights with clan leaders,¹²⁶ while some others in the community opposed the plantation.¹²⁷ The concession's location in a militarised area near the border with Papua New Guinea reportedly meant that some clans eventually accepted the company's offer, even if this may not have been their free choice.¹²⁸ Protest actions against forest clearance also took place, with indigenous community members erecting roadblocks and confiscating keys to bulldozers.¹²⁹

Compensation paid to the eight clans who accepted a deal with Rajawali was reportedly low, an average of 384,000 Rupiah (US\$29) per hectare.¹³⁰

Map:
● Forest cover 2013
○ Concession boundary
● Deforestation 2011-2013
● FORMA alerts
Background satellite images are Landsat 8



CASE STUDY: VARIA MITRA ANDALAN

Concession name: **PT Varia Mitra Andalan**

Location: **Moswaren and Wayer sub-districts, South Sorong, West Papua**

Policy violation

- **Post-2014 forest clearance (and apparent failure to follow an FPIC process) places Eagle High in violation of IOI's policy.**

PT Varia Mitra Andalan received a Forest Release permit for its 20,325ha concession in 2013.¹³¹ The concession was part of the Rajawali's Green Eagle Group before the BW Plantation deal which resulted in the creation of Eagle High Plantations Tbk.

Deforestation

Mapping analysis from Kepo Hutan based on MoEF landcover maps shows PT Varia Mitra Andalan's concession was almost entirely covered in secondary forest in 2013, before plantation work commenced in 2014.

Satellite images indicate that PT Varia Mitra Andalan cleared an area of around 1,000ha in 2015.¹³² The majority of the concession remains forested.

FPIC

No reports were available of whether PT Varia Mitra Andalan engaged in a process of free, prior and informed consent with local indigenous communities.

IOI statement

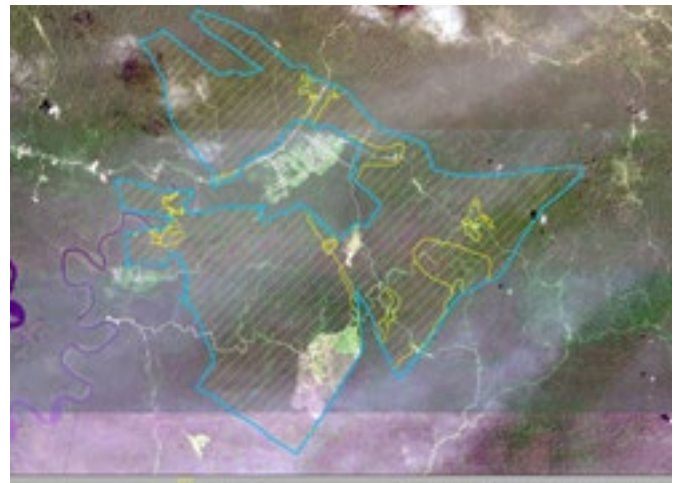
'Based on the information provided by Greenpeace we have contacted our third party suppliers and requested for an urgent update on these allegations. Several suppliers already provided an update on how they are dealing with [Eagle High].'¹³³

Trader statements

In emails to Greenpeace on 20 September 2016, Wilmar and GAR confirmed that they still have ongoing commercial relationships with Eagle High.¹³⁴ Wilmar has been in ongoing dialogue with Eagle High since June 2015, noting that the company agreed to a moratorium in PT Varia Mitra Andalan and has completed an HCS assessment. Wilmar told Greenpeace that it had no prior knowledge of the issues relating to PT Arrtu Energie Resources and PT Tandan Sawita Papua. GAR told Greenpeace that it is aware of the issues with the PT Varia Mitra Andalan and PT Arrtu Energie Resources concessions, but its grievance dashboard only references the former.¹³⁵

Company statement

Greenpeace contacted Eagle High before publication to seek confirmation of its findings. At the time of publication, Greenpeace had received no response from the company.



Map:
● Forest cover 2013
○ Concession boundary
● Forest cover 2011
● Deforestation 2011-2013
● FORMA alerts
Background satellite images are Landsat 8

GOODHOPE/ CARSON CUMBERBATCH



IOI's Sustainability Policy

All provisions in this policy apply to all third-party suppliers in our supply chain.

- Ensure no deforestation of high conservation value (HCV) areas and high carbon stock (HCS) areas.
- Protect peat areas regardless of depth in new developments.
- Eliminate all forms of forced and child labour.
- Respect the right of indigenous and local communities to give their Free, Prior and Informed Consent (FPIC) to operations on lands over which they hold legal, communal or customary rights.

Dato' Lee Yeow Chor
IOI CEO



Goodhope is the palm oil plantations subsidiary of Carson Cumberbatch, a conglomerate that began as a 19th-century Sri Lankan coffee and rubber producer and now holds interests across Southeast Asia including hotels, real estate and breweries.¹³⁶

Violations of IOI policy

- **Deforestation:** clearance of primary forest in Papua (PT Nabire Baru, Papua)
- **Peat:** plantation development on peat (PT Nabire Baru, Papua)
- **Exploitation:** taking over indigenous land without free, prior and informed consent and using state security forces to repress local opposition (PT Nabire Baru, Papua)

Links to IOI

From Q2 2015 through Q1 2016, IOI Lodders Croklaan purchased

palm oil or palm kernel oil from the following Goodhope-owned mills for its refineries in the Americas and the Netherlands:¹³⁷

- PT Agro Wana Lestari Bukit Santuai Mill (via Victory Tropical Oil/GAR, Wilmar)
- Karya Makmur Sejahtera (via Victory Tropical Oil/GAR, Wilmar)
- PT Agro Indomas Sungai Purun POM (via ICOF/Musim Mas, GAR, Wilmar)
- PT Agro Indomas Terawan POM (via ICOF/Musim Mas, GAR, Wilmar)
- Agro Bukit (via Wilmar)

Group overview

Company: **Goodhope Asia Holdings Ltd**

Group: **Carson Cumberbatch PLC**

Headquarters: **Sri Lanka (Goodhope Asia Holdings Ltd is incorporated in Singapore)**

Stocklisted: **Carson Cumberbatch is listed on the Colombo Stock Exchange (Sri Lanka)**

RSPO member: **Yes¹³⁸**

Carson Cumberbatch PLC holds a 53.3% stake in Goodhope Asia Holdings Ltd, with another Carson Cumberbatch Group company, Bukit Darah PLC, holding a 35.6% stake. Bukit Darah is a holding company which itself owns 45.7% of Carson Cumberbatch.¹³⁹

Plantations and mills

Goodhope holds 15 oil palm concessions in Indonesia, in the provinces of West, South, Central and East Kalimantan and Papua.¹⁴⁰ The company has four further concessions in Malaysia.¹⁴¹


Landbank: **132,463 hectares**

Planted area: **69,502 hectares**

Mature area: **54,961 hectares**

Immature area: **14,542 hectares¹⁴²**

Goodhope's two concessions in Papua, PT Nabire Baru and PT Sariwana Adi Perkasa, comprise 17,000 hectares and 8,190 hectares respectively.¹⁴³ Timber extraction in the two concessions



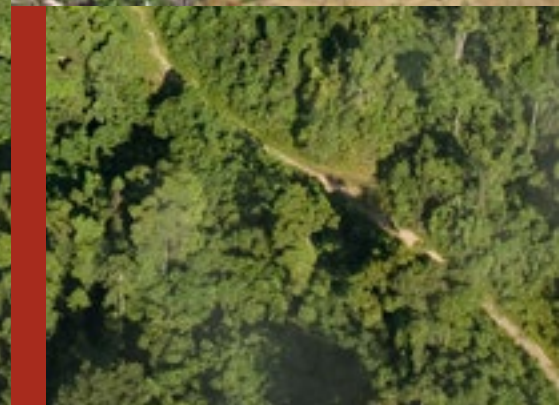
‘No Development in areas which are identified as High Conservation Value areas and High Carbon Stock areas. This includes, but not limited to, forest areas with high carbon stock and peat areas, as identified during High Conservation Value Assessment and High Carbon Stock Assessment. [...] The policy would be effective for implementation from this date.’

Edi Suhardi, Sustainability Director, Conservation and New Development Policy, 4 May 2013

13 October 2008, Papua:
A logging track through forests near Nabire.
©Rante/Greenpeace



2014, PT Nabire Baru.
©Yayasan Pusaka



is carried out by a company called PT Sariwana Unggul Mandiri, which is not listed as a subsidiary of Carson Cumberbatch PLC in its annual report¹⁴⁴ or on the Goodhope website.¹⁴⁵

Goodhope also owns edible oils and fats processing plants in Malaysia and India.¹⁴⁶

Goodhope stated that it produced 234,270 tonnes of CPO during the financial year 2014/15.¹⁴⁷

Carson Cumberbatch PLC, as well as its agribusiness and oils and fats divisions, is involved in portfolio and asset management, breweries, real estate, hotels and management services.¹⁴⁸

Environmental position

The environmental policies on Goodhope’s website are limited to implementing good environmental management practices in plantation areas and mills and a commitment to identify and maintain high conservation value areas. The company makes no public commitment to avoid developing plantations on forested areas or peatlands, nor to implement a rigorous FPIC process with indigenous or other affected communities,¹⁴⁹ although a document was furnished to Greenpeace.

Goodhope’s 2015 Annual Communication of Progress to the RSPO refers to a ‘Sustainability Code of Conduct’,¹⁵⁰ but no document using that title could be found in the public domain,

including in annual reports or on company websites or the RSPO website.

Certification and transparency

Goodhope has been a member of the RSPO since 2 December 2014.¹⁵¹

Three palm oil estates have received RSPO certification,¹⁵² and two processing facilities in Malaysia have received supply chain certification.¹⁵³

Goodhope has stated that it plans to achieve full RSPO certification by 2019.¹⁵⁴

Goodhope has submitted information to the RSPO under the New Planting Procedures for its plantations in Kalimantan, but no concession maps or management plans for the Papuan concessions are publicly available.

Documentation related to a complaint about PT Nabire Baru that was submitted to the RSPO in April 2016 has not been uploaded to the RSPO’s website case tracker facility¹⁵⁵ at the time of publication, despite the RSPO having discussed the case in its complaints committee and sought meetings with the company.¹⁵⁶

Goodhope’s 2015 ACOP omits important and relevant information. It claims that no land disputes exist, despite a high-profile ongoing dispute in PT Nabire Baru’s concession (see below).¹⁵⁷



12 May 2016, PT Nabire Baru:
Yerisiam youths protest land clearance
within the concession.
©Yerisiam

‘The FPIC component has been be integrated into the land acquisition process (the description of the awareness session on both positive and negative aspects of development), with cooperation of an independent neutral parties including Local Politicians, District Officers, Local Police and Army units.’

Public Summary Report ‘New Plantings Assessment: PT Nabire Baru’ July 2011

CASE STUDY: NABIRE BARU

Concession name: **PT Nabire Baru**

Location: **Nabire, Papua**

Policy violation

- **Deforestation of primary forest and peatland, permit irregularities including development without an Environmental Impact Assessment, failure to follow a proper FPIC process and excessive use of force including use of state security forces place Goodhope in violation of IOI’s policy.**

Mapping analysis from Kepo Hutan and Global Forest Watch

- MoEF landcover maps show that in 2011 the concession was predominantly forested.
- By 2013, MoEF maps showed several thousand hectares of mostly primary forest, including peat forest, had been cleared.

Deforestation

As of mid-2016 deforestation was believed to be ongoing, with Landsat images showing at least 70% of PT Nabire Baru’s concession cleared or divided into plantation blocks.¹⁵⁸

Peat

The concession includes several thousand hectares of peatland, which were not excluded from the area that was cleared.

Permit irregularities including lack of Environmental Impact Assessment

PT Nabire Baru commenced operations in 2010 using a licence issued in 2008. However, the company had not fulfilled all the requirements for such a permit to be issued under regulations in force at the time;¹⁵⁹ in particular, no Environmental Impact Assessment (EIA) had been carried out.¹⁶⁰

A location permit from the Bupati of Nabire¹⁶¹ was issued eighteen months later and the company commenced land clearing, still without an EIA.

The first public consultation for an EIA took place in April 2013.¹⁶² PT Nabire Baru’s Environmental Permit was finally approved by the provincial governor on 26 August 2014.¹⁶³

In October 2015 the Yerisiam Gua indigenous group launched a legal challenge to this permit in the State Administrative Court (PTUN).¹⁶⁴ The judges did not make a decision about the legality of the permit, having declared the case inadmissible as the limit of 90 days to appeal a government decision had been exceeded.¹⁶⁵

On 25 March 2016, just one week before the court took its decision, the Sima village within PT Nabire Baru’s concession area suffered severe flooding which inundated 56 houses, requiring the residents to evacuate the village.¹⁶⁶ Local people attributed the flooding to deforestation for the oil palm plantation, claiming that flooding had occurred repeatedly since forest clearance began,¹⁶⁷ years before the EIA was approved. A thorough Environmental Impact Assessment would have been expected to anticipate flooding risk and only recommend going ahead with the plantation if a way could be found to mitigate this risk.

FPIC

There has been sustained opposition to PT Nabire Baru and neighbouring Goodhope concession PT Sariwana Adi Perkasa's operations by the local indigenous Yerisiam people.¹⁶⁸ Local indigenous activists have alleged that PT Nabire Baru did not obtain the community's free, prior and informed consent, having only received permission for selective logging, which would have much less impact on local people.¹⁶⁹

On 26 October 2015, members of the Waoha clan, together with other members of the Yerisiam people, erected banners and traditional markers to prohibit PT Nabire Baru from clearing 1,000 hectares of forest, using a customary law practice known as sasi. It appears that individuals from the clan had signed over this area to PT Nabire Baru without first bringing the matter to a consensus meeting.¹⁷⁰

On 12 April 2016 a further dispute emerged when the company started clearing land for plasma, including the Jarae and Manawari sago groves, which are sacred sites for the Yerisiam people as well as being important food sources.¹⁷¹ Fully armed state security force guards were reportedly present when the sago groves were cut down.¹⁷²

Excessive use of force including use of state security forces

'Company policy should prohibit the use of mercenaries and para-militaries in their operations. Company policy should prohibit extrajudicial intimidation and harassment by contracted security forces.'

Specific Guidance for RSPO P&C 2.2.6, 2013

PT Nabire Baru has used state security forces to provide security on its plantation, and this has resulted in a series of violent or intimidating incidents, which have often reportedly targeted community members who oppose the plantation.¹⁷³ Allegations include:

1. In June 2013, customary landowner and employee Titus Money was handcuffed and assaulted after protesting that his wages were late.¹⁷⁴
2. State security forces pointed guns at and threatened to shoot Immanuel Monej, an indigenous landowner, when

he complained that PT Nabire Baru was not honouring a memorandum of understanding promising to employ local people in construction work.¹⁷⁵

3. State security force guards smashed up local resident Yunus Money's house, causing his family to flee to the forest in fear, possibly as a response to his involvement in previous community protests against the aggressive approach of state security forces.¹⁷⁶

RSPO complaint

These issues of taking land without consent, deforestation, flooding, the destruction of sacred sites and the use of state security forces as company guards are the subject of an RSPO complaint against Goodhope brought by NGO Yayasan Pusaka and members of the Yerisiam ethnic group on 19 April 2016. This complaint has not been posted on the RSPO website at the time of publication.

IOI statement

'Based on the information provided by Greenpeace we have contacted our third party suppliers and requested for an urgent update on these allegations. Several suppliers already provided an update on how they are dealing with [Goodhope].'¹⁷⁷

Trader statements

In emails to Greenpeace on 20 September 2016, GAR and Wilmar confirmed that they have ongoing commercial relationships with Goodhope.¹⁷⁸ Wilmar stated that it has engaged with the company, and that monitoring shows that development has stopped since 2015, though this case is not registered on its current grievance list.¹⁷⁹ GAR stated that the case study is new information. Musim Mas stated that it does not purchase from Goodhope's Papuan operations, but would 'follow up on the process of engagement regarding the Central Kalimantan and South Sumatran operations'.¹⁸⁰

Company statement

Greenpeace contacted Goodhope before publication to seek confirmation of its findings. In an email reply,¹⁸¹ Goodhope states that 'Goodhope Indonesia has not sold any CPO to IOI corporation'. It fails to address general policy compliance questions of deforestation or peatland development that apply equally to the policies of its direct traders. The



September 2013, PT Nabire Baru: Sago grove clearance. ©Yerisiam

22 February 2015, PT Nabire Baru: A Greenpeace investigator documents the location of cleared forest in Wami, Yaur District. ©Greenpeace



21 May 2016, PT Nabire Baru:
An excavator stuck after the clearance of a sago grove in Manawari, Yaur District.
© Yerisiam

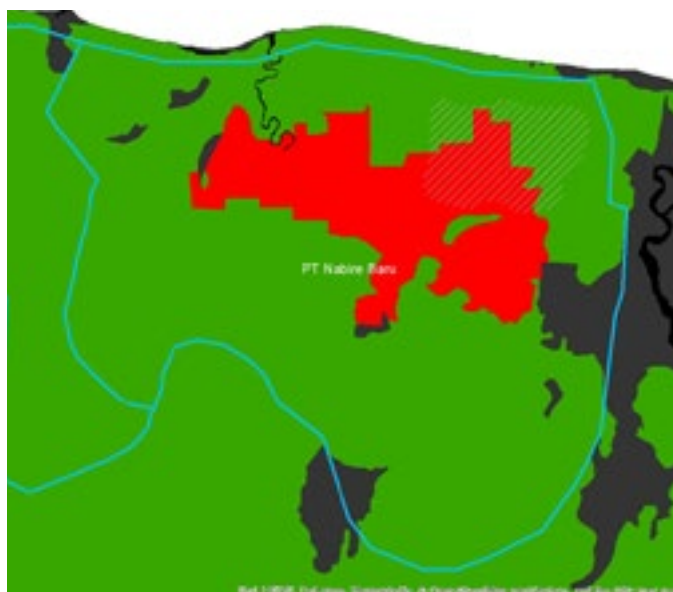
25 March 2016, PT Nabire Baru:
Floods. © Yerisiam

November 2014, PT Nabire Baru:
Cleared forest in Wami, Yaur District.
© Yerisiam





Map:
 ● Forest cover 2013
 ● Forest cover 2011
 ○ Concession boundary
 ● Deforestation 2011-2013
 Background satellite images
 are Landsat 8



email response fails to respond to allegations of primary forest clearance, but claims to have adopted a No Peat commitment¹⁸² in 2010, and a No Deforestation policy based on High Carbon Stock Assessment in early 2013,¹⁸³ which - taken at face value - would put it in the avant garde in terms of policy commitments if not practice.

The company response does not address allegations of peatland development in PT Nabire Baru, but does provided the 2011 New Planting Assessment report. The report, which uses the 1990 RepPPPOT maps to produce preliminary maps to help the HCV identification process, finds no peat soils in the area to be developed, but notes that 'a more detail soil survey will follow before plantation development commence'¹⁸⁴; this document has not been shared.

In terms of the social issues, including respecting the principle of FPIC, it claims to adhere to this. Indeed, according to the 2011 New Plantings Assessment report for PT Nabire Baru, 'PT NB is in the process of negotiating with customary landowners to acquire land for plantation expansion. This process commenced in 2011 and agreements are in the process of being negotiated then will be finalised before planting finalises. The FPIC component has been be integrated into the land acquirement process (the description of the awareness session on both positive and negative aspects of development), with cooperation of an independent neutral parties including Local Politicians, District Officers, Local Police and Army units.'¹⁸⁵ It should be noted that this contravenes RSPO P&C 2.2.6. When asked about the use of state security forces by Greenpeace, the company claimed Goodhope

claimed that the situation was complex and included concerns about regional security. Goodhope representatives stated that, as part of the FPIC process, communities admitted that the presence of security forces was not repressive or intimidating but rather something to maintain everyone's safety and security¹⁸⁶

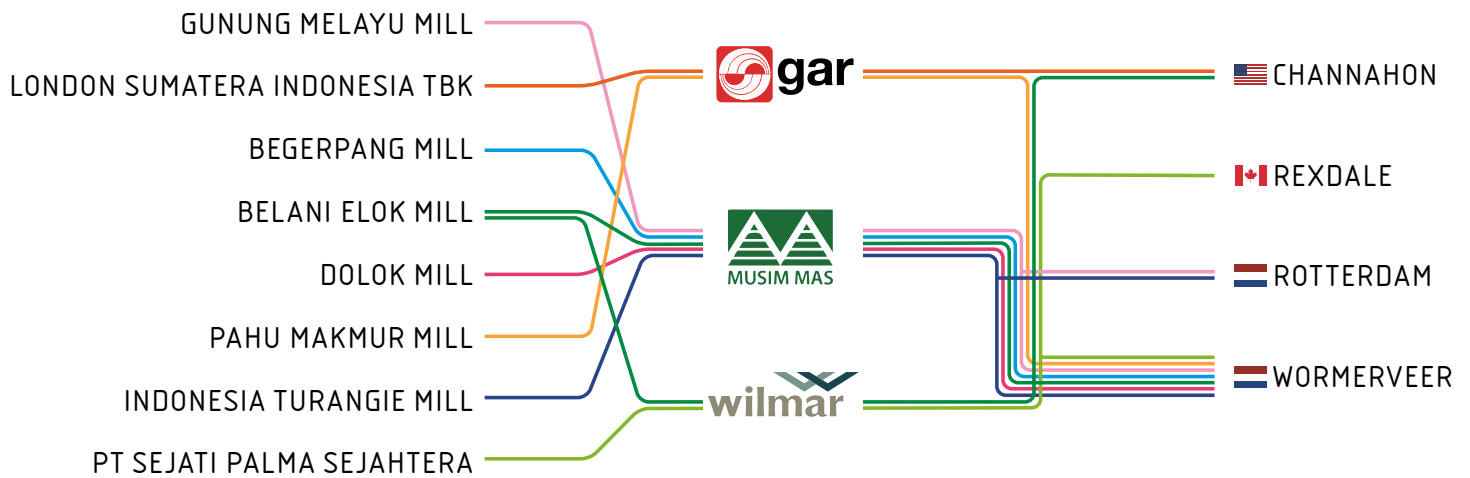
In relation to the RSPO grievance brought by PUSAKA, when asked about this case by Greenpeace, the company claimed that the root of the dispute was not about FPIC or a genuine community land dispute, but about personal demands which could not be agreed to by the company.¹⁸⁷ In an email, the company stated: 'With regards to above issues and concerns related to grievances made by Pusaka and raised by FPP, the RSPO has been playing a role as facilitator in the settlement of the grievances and allegations by organizing several meetings and planned a field verification scheduled on 26-29 September 2016.'¹⁸⁸

In terms of transparency, echoing the response of ANJ, Goodhope answered: 'Please note that due to the issuance of the letter from the DG Plantations of the Ministry of Agriculture and latest letter from the Minister of Agrarian and Spatial Planning as clarification to previous minister's letter (see attached letter below), the sharing and publication of e-maps or georeference locations are prohibited or should be approved by the authority. Goodhope must abide by the Indonesian government policy and regulations.'¹⁸⁹



30 May 2015,
PT PP Lonsum Kedang Makmur:
0°24'37.21"S 116°3'11.48"E
Drainage canal, charred tree stump amid
other signs of recent development in East
Kalimantan.
©Aidenvironment

INDOFOOD/SALIM GROUP



IOI's Sustainability Policy

All provisions in this policy apply to all third-party suppliers in our supply chain.

- **Ensure no deforestation of high conservation value (HCV) areas and high carbon stock (HCS) areas.**
- **Protect peat areas regardless of depth in new developments.**
- **Observe zero-burning in all new planting and replanting of oil palm.**
- **Eliminate all forms of forced and child labour.**

Dato' Lee Yeow Chor
IOI CEO



PT Indofood CBP Sukses Makmur (Indofood) is a major vertically integrated food conglomerate, with interests from palm oil plantations to flour mills and a consumer products division that ranks as one of the world's largest instant noodle manufacturers (Indomie), as well as interests including dairy, snack foods and beverages.¹⁹⁰ Indofood is a joint-venture partner with PepsiCo as the sole producer of PepsiCo branded products in Indonesia¹⁹¹ and has a 50/50 joint venture with Nestle, PT Nestle Indofood Citarasa Indonesia.¹⁹²

Violations of IOI policy

- **Deforestation:** considerable clearance in 2013–2014, including 1,000ha of primary forest; satellite-based alerts suggest active clearance continuing in 2016 (Isuy Makmur/Kedang Makmur, East Kalimantan)
- **Peat:** possible deforestation on peat (Isuy Makmur/Kedang Makmur, East Kalimantan)
- **Fires:** rampant fires during 2014 and 2015, including in cleared primary forest areas (Isuy Makmur/Kedang Makmur, East Kalimantan)

- **Exploitation:** use of child labour, paying below minimum wage and breaches of health and safety standards (PT Lonsum concessions, North Sumatra)

Links to IOI

IOI Loders Croklaan's traceability dashboard shows purchases from the Gunung Melayu mill profiled below as well as the Pahu Makmur mill owned by Indofood (London Sumatera) on the Pahu Makmur concession, neighbouring Kedang Makmur/Isuy Makmur. IOI Loders Croklaan purchased this oil from Inter-Continental Oils and Fats (ICOF, the trading arm of Musim Mas) at least between Q2 2015 and Q1 2016 for its Rotterdam and Wormerveer refineries.¹⁹³ IOI Loders Croklaan also purchased from Lonsum mills and Salim mills via ICOF/Musim Mas, GAR and Wilmar.

Group overview

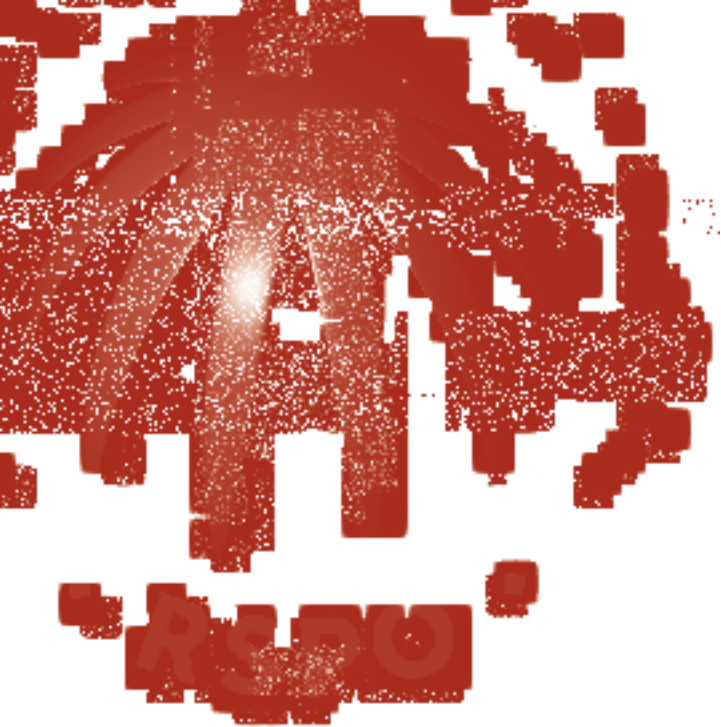
Indofood is part of the Salim Group, headed by Anthoni Salim, who holds a controlling interest in Indofood via First Pacific Company and CAB Holdings.¹⁹⁴ The loosely structured Salim Group also holds extensive palm oil concessions via other companies, including the Gunta Samba Group.

Plantations and mills

Indofood's agriculture subsidiary Indofood Agri Resources Ltd (IndoAgri) is one of the largest vertically integrated palm oil companies in Indonesia. IndoAgri is headquartered in Indonesia and listed on the Singapore stock exchange. IndoAgri has two operating subsidiaries: PT Salim Ivomas Pratama (Salim Ivomas) and PT PP London Sumatera Indonesia (Lonsum), reported as a subsidiary of Salim Ivomas in its financial statements.¹⁹⁵

IndoAgri holds plantations in North Sumatra, South Sumatra, Riau, and West, Central and East Kalimantan.¹⁹⁶

The company had 246,000 hectares of oil palm planted in Indonesia as of the end of 2015, plus 90,000 hectares of plasma (this includes an unspecified amount of rubber plantation).¹⁹⁷



As of 31 December 2015, IndoAgri owned and operated 24 palm oil mills with a combined FFB processing capacity of 6.4 million tonnes per annum.¹⁹⁸ It has an annual FFB output of 4.7m tonnes¹⁹⁹ and CPO output of 1m tonnes.²⁰⁰

Environmental position

IndoAgri is the largest private Indonesian palm oil company that does not yet have a comprehensive 'No Deforestation, No Peat, No Exploitation' (NDPE) policy. Its own sustainability policy is weak in comparison to those of some of its peers. Its policy for its own plantations includes commitments to no HCV clearance, no peatland cultivation and conserving primary forest, but lacks any pledges to protect high carbon stock forest or proper provision for labour rights such as International Labour Organisation (ILO) conventions or UN guiding principles.²⁰¹ IndoAgri's sourcing policy for its third-party suppliers allows for planting on peat of up to 3 metres in depth, and fails to extend provisions for FPIC, thereby making it weaker than its sustainability policy for its own plantations.²⁰²

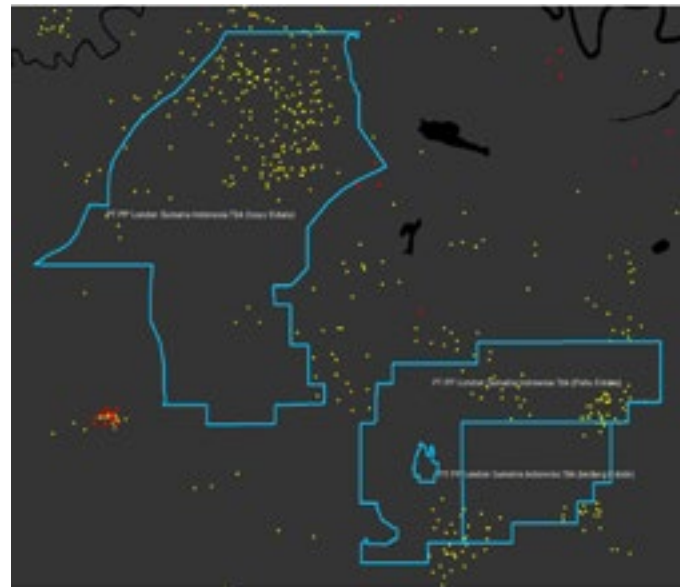
Certification and transparency

IndoAgri subsidiaries PT London Sumatra Indonesia²⁰³ and PT Salim Ivomas Pratama²⁰⁴ are members of the RSPO, but other Salim Group companies are not. Both companies submitted 2015 Annual Communications of Progress to the RSPO, but they have not disclosed maps of their concessions.

RSPO certification

IndoAgri produced 377,000 tonnes of certified CPO in 2015.²⁰⁵ 27 of its 82 concessions and 9 of its 24 palm oil mills were certified as of 2015.²⁰⁶ IndoAgri is aiming for full certification of its plantations and smallholders in 2019.²⁰⁷

The RSPO returned the submitted New Planting Procedures report for Isy Makmur due to incomplete documentation.²⁰⁸ At the time of writing, this document (if re-submitted) was not available on the RSPO website, although evidently non-compliant development of the concession had begun in 2013



Map:
 ○ Concession boundary
 ● Peat
 ● 2015 Fire Hot Spots
 ● 2016 Fire Hot Spots
 Background satellite images are Landsat 8

CASE STUDY: ISUY MAKMUR / KEDANG MAKMUR

Concession name: **Isuy Makmur or Kedang Makmur**²⁰⁹

Location: **West Kutai, East Kalimantan**

Policy violation

- **Recent deforestation, including primary forest, and peatland development place Indofood in violation of IOI's policy.**
- **Extensive fires raise questions about mismanagement.**

Mapping analysis from Kepo Hutan and Global Forest Watch

GLAD alerts suggest ongoing clearance in the concession in 2016.

- GFW satellite-based plantations mapping from 2013–2014 shows large areas of recently cleared land in the concession and beyond the northwest boundary, including areas shown as primary swamp forest in 2013 MoEF landcover mapping.
- The concession saw over 100 fire hotspots during 2015, including in the cleared primary forest area.
- Most of the concession is mapped as peat of unknown depth.

Deforestation

A 2015 investigation by Aidenvironment found PT Lonsum had cleared around 1,000ha of land in the concession during 2013 and 2014 which was shown as primary forest on MoEF landcover maps. IndoAgri claimed the land was secondary forest, but did not disclose evidence for this claim. Aidenvironment's analysis suggests total clearance of around 4,600ha of forest of all types in the concession, as well as rampant fires.²¹⁰ Deforestation puts the company in breach of IOI Lodders Croklaan's sustainability policy.

CASE STUDY: LONSUM CONCESSIONS IN NORTH SUMATRA

Concession name: **Confidential to protect workers**

Location: **North Sumatra**

Policy violation

- **Use of child labour and exploitation of workers places Indofood in violation of IOI's policy.**

Exploitation/mistreatment of workers and child labour

A 2015 investigation of two PT Lonsum plantations in North Sumatra found evidence of a range of poor labour practices by IndoAgri, including child labour, workers being paid unethically low wages (lower than district minimum), workers using pesticides in violation of RSPO P&C and without proper safety equipment, and quota systems that encourage increased use of informal workers (including workers bringing along their wives and children to help meet the quota).²¹¹ This investigation was reported by OPPUK, Rainforest Action Network (RAN) and the International Labor

Relations Forum (ILRF). IndoAgri has thus far declined to comment on the findings of the report, and downstream customers have been reluctant to engage the company on this matter or to require it to investigate the labour conditions on its own plantations.

An RSPO Compliance Assessment was completed at a third Lonsum-owned mill and supply base in North Sumatra to assess the issues raised. This assessment of Gunung Malayu mill, and its supply base of Gunung Malayu and Sei Rumbiya estates, confirmed breaches of health and safety standards, particularly around pesticide use, including one worker consistently detailed to spraying activity for at least three months in spite of health concerns. The assessment also found indirect evidence of use of informal workers including harvesters' family members, and gender discrimination in employees' benefits.²¹²

IOI statement

'[Indofood was] already reported in the list of grievances of our third party suppliers which is monitored by our sustainability department. We have also requested our third party suppliers for an update.'²¹³

Trader statements

In an email to Greenpeace of 20 September 2016, Musim Mas indicated it had engaged top management at Indofood in June 2016 regarding the documented labour issues and is encouraging the company to go through the RSPO process. Musim Mas has not indicated that it has suspended trade.²¹⁴

While IOI only purchased palm products from Indofood via Musim Mas, the areas in the above case studies are also in the supply chains of Wilmar and GAR. Wilmar has engaged Indofood on issues of land clearance since in September 2015, but stated that no further land clearance by the company has taken place since late 2015, according to its unnamed 'independent partner'. In response to the labour issues, while monitoring the case and engaging, Wilmar stated that it prefers to let the RSPO process 'run its course'.²¹⁵ Wilmar has not indicated that it has suspended trade. GAR stated that it has 'initiated engagement with RAN, OPPUK and Indoagri/Lonsum',²¹⁶ but it has not yet updated its grievance dashboard²¹⁷ with this case nor indicated any trade suspension.

Company statement

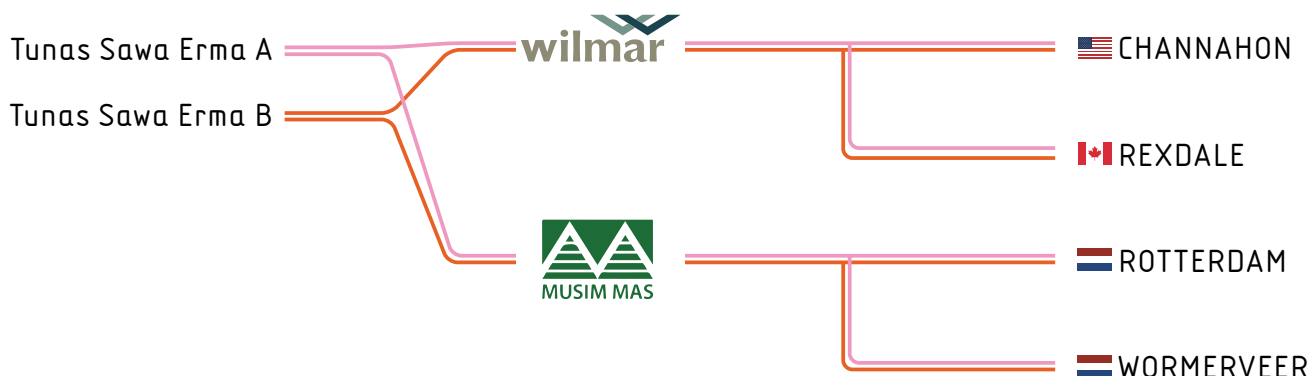
Greenpeace contacted Indofood before publication to seek confirmation of its findings. At the time of publication, Greenpeace had received no response from the company.



**“Korindo has been practicing
‘No Deforestation, No Peat, No
Exploitation’, in compliance with all
palm plantation related regulations
of the Indonesian government”**

Korindo, 23 September 2016

4 June 2016, PT Papua Agro Lestari.
©Mighty



IOI's Sustainability Policy

All provisions in this policy apply to all third-party suppliers in our supply chain.

- Ensure no deforestation of high conservation value (HCV) areas and high carbon stock (HCS) areas.
- Observe zero-burning in all new planting and replanting of oil palm.

Dato' Lee Ychow Chor
IOI CEO



Korindo is a privately held company that publishes little financial or ownership information. It is controlled by the South Korean Seung family. Group interests other than palm oil include logging, pulp and paper, and wood products.

Violations of IOI policy

- **Deforestation:** 50,000 hectares of primary and secondary forest cleared in Korindo concessions in Papua
- **Fires:** apparent use of fire for land clearing

Although IOI stated at the beginning of September 2016 that its third-party suppliers have 'decided to temporarily stop sourcing from Korindo',²¹⁸ this decision (not by IOI itself, but its suppliers) was only taken following public exposure of Korindo's activities, even though allegations from credible sources about its plantations in Papua have been in the public domain for some time.²¹⁹ Greenpeace first raised concerns about the wider group in 2004.²²⁰

Clearly, any decision to re-engage with this company by any of the major palm oil traders must be based on solid, verified evidence of profound and genuine reform in Korindo's group-wide business model.

Links to IOI

Between Q2 2015 and Q1 2016, IOI Loders Crokiaan purchased products from Korindo's Tunas Sawa Erma A and B mills in Papua via Wilmar and ICOF (Musim Mas), although the parent company of these mills is listed in IOI Loders Crokiaan's data as Tradisi Group.²²¹

Group overview

Group: **Korindo**
Headquarters: **Indonesia**
Stocklisted: **No**
RSPO member: **No**

Plantations and mills

Korindo holds eight oil palm concessions, seven in Papua and one in North Maluku, totalling 159,600 hectares.

Korindo's Tunas Sawa Erma mills produced 109,000 tonnes of CPO and 23,800 tonnes of PKO in the year to September 2015.²²²

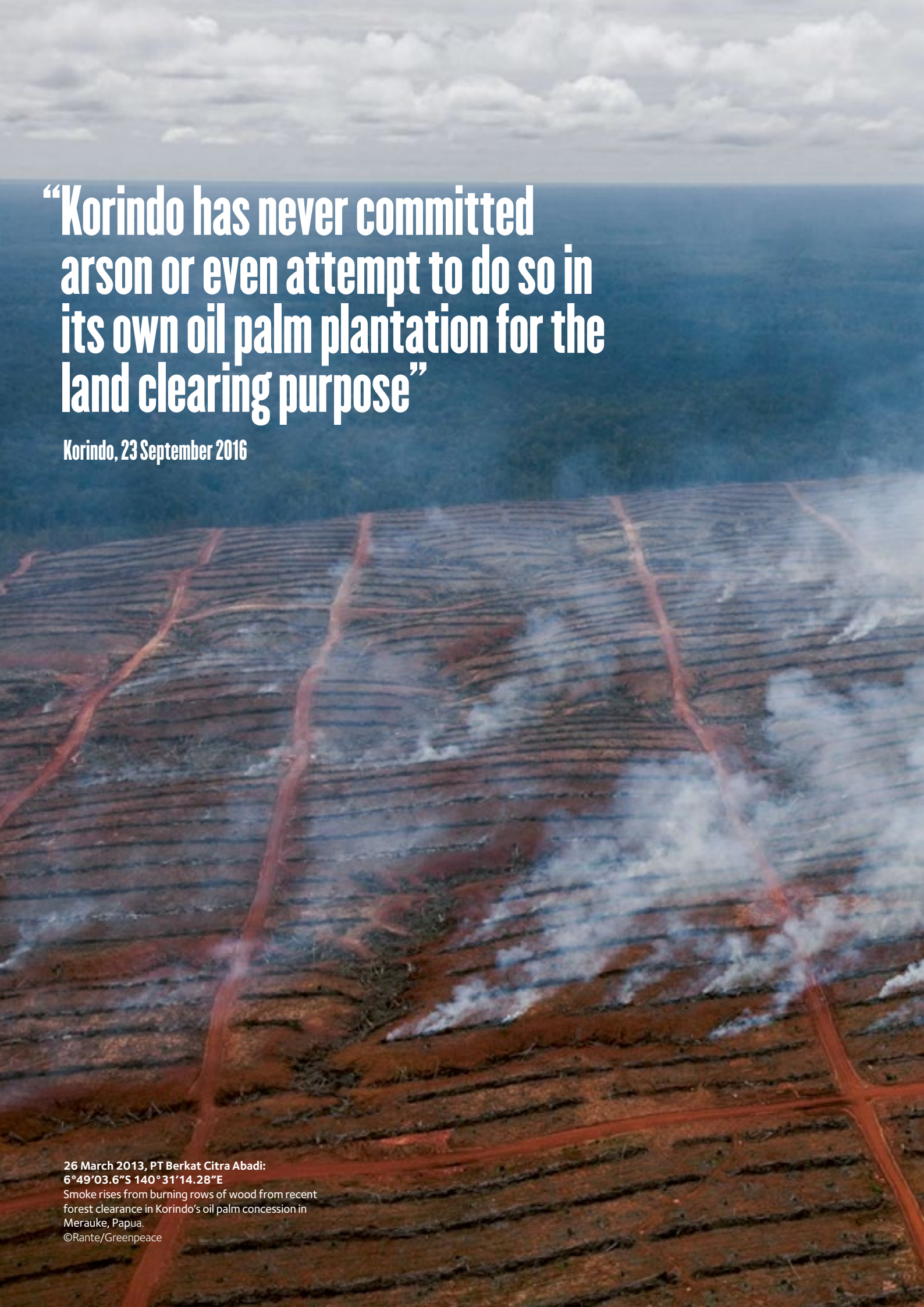
Environmental position

Korindo has published no specific sustainability policies with regard to its oil palm and forestry operations.

Korindo subsidiary PT Tunas Sawa Erma, which controls three plantations in Papua, announced on 9 August 2016 a three-month moratorium on development while it establishes a comprehensive 'No Deforestation, No Peat, No Exploitation' policy and conducts stakeholder engagement. This followed pressure from customers Wilmar and Musim Mas.²²³

At the time of writing, Korindo has not announced any suspension of development or introduction of NDPE policies on its other concessions.

A 2016 investigation found that in total, Korindo has destroyed 50,000 hectares of forest across its palm oil concessions, 30,000ha of which since 2013.²²⁴ Korindo appears to have systematically used fire in all its concessions and was responsible for 495 fire hotspots in concessions undergoing development in 2015 alone.²²⁵



“Korindo has never committed arson or even attempt to do so in its own oil palm plantation for the land clearing purpose”

Korindo, 23 September 2016

**26 March 2013, PT Berkat Citra Abadi:
6°49'03.6"S 140°31'14.28"E**

Smoke rises from burning rows of wood from recent forest clearance in Korindo's oil palm concession in Merauke, Papua.

©Rante/Greenpeace



CASE STUDY: DONGIN PRABHAWA

Concession name: **PT Dongin Prabhawa**

Location: **Mappi/Merauke, Papua**

Policy violation

- **Deforestation of primary and secondary forest and place Korindo in violation of IOI's policy.**
- **Deliberate use of fire for clearing would violate IOI's policy and Indonesian law.**

Deforestation

PT Dongin Prabhawa cleared a total of 6,700 hectares of forest in the period from 2011 to May 2016, 2,900 hectares of which was primary forest.²²⁶

Part of this concession was mapped as Intact Forest Landscapes in 2013,²²⁷ meaning the area has a particular conservation importance which would be disturbed by even partial plantation development.

Apparent deliberate use of fire

Fire hotspots in the concession since 2013 show clear evidence of Korindo using fire to clear biomass from the land before planting. In total, 351 hotspots were recorded in the PT Dongin Prabhawa concession during the period from 2013 to 2015 (43 in 2013, 144 in 2014 and 164 in 2015). During the period from 2013 to 2015, there were almost no fires in the forested area surrounding the plantation development, and also no fires in the areas that had already been planted with oil palm. This shows that fires occurred only during the land clearing stage.²²⁸



Map:
● Forest cover 2013
○ Concession boundary
■ Deforestation 2011-2013
● 2015 Fires Hot Spots
● 2016 Fires Hot Spots
● FORMA alerts
Background satellite images are Landsat 8



26 March 2013, PT Berkas Citra Abadi:
6°48'4"S 140°31'20"E
Boundary road divides rows of recently
cleared forest logs from the surrounding
rainforest in Korindo's oil palm concession
in Merauke, Papua.
©Rante/Greenpeace



CASE STUDY: PAPUA AGRO LESTARI

Concession name: **PT Papua Agro Lestari**
Location: **Boven Digoel, Papua**

Policy violation

- Clearance of primary forest, failure to conduct an HCV assessment and apparent use of fire to clear land place Korindo in violation of IOI's policy.

Mapping analysis from Kepo Hutan and Global Forest Watch

- **PT Papua Agro Lestari was almost entirely covered by primary forest in 2013**, according to MoEF landcover maps.

Deforestation

By the end of 2015, around 2,600ha of primary forest had been cleared and Korindo had carved out plantation blocks in 2,300ha of primary forest east of the cleared area. By the first week of June 2016, it had already cleared 1,200ha of that area. The satellite images from June 2016 show no riparian buffer

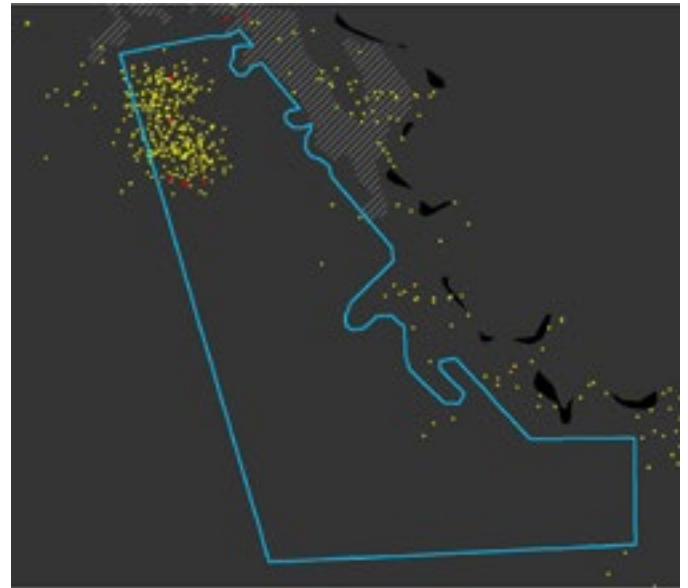
around the flood area, indicating that there has been no proper assessment of high conservation value areas.²²⁹

Apparent deliberate use of fire

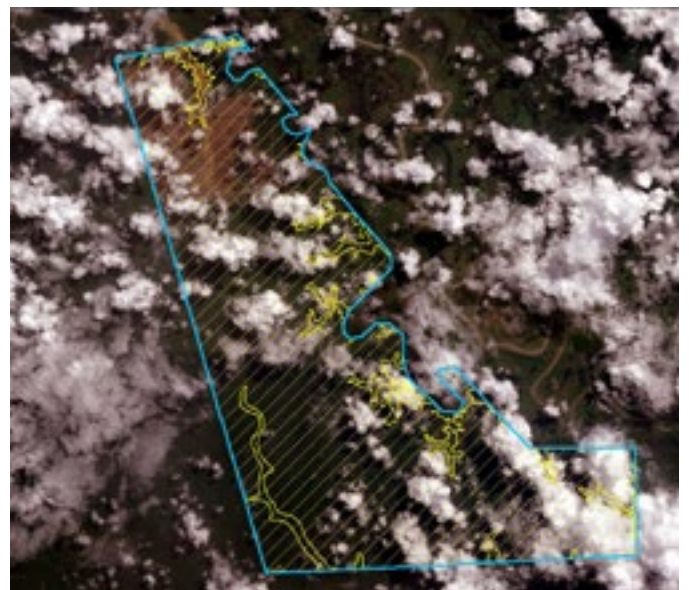
The clearing was accompanied by fires, with a total of 221 hotspots recorded between August and November 2015 – most of them densely concentrated in the recently cleared area in the northwest corner of the concession. In 2013 and 2014, prior to land development, there were no recorded fire hotspots in the concession. This shows that fires occurred only during the land clearing stage, providing evidence of the company using fire to clear biomass from the land before planting.

IOI statement

In early September 2016, IOI reported through the press that its third-party suppliers had 'decided to temporarily stop sourcing from Korindo',²³⁰ but failed to make a clear commitment itself to stop sourcing from the company. 'In August, 2016, our suppliers confirmed they have engaged with Korindo and decided to temporarily stop sourcing from Korindo. In the meantime our third party suppliers will continue to engage with Korindo to help Korindo adopt and implement a policy that is compliant with the policy of our third party



Map:
 ● Forest cover 2013
 ● Forest cover 2011
 ○ Concession boundary
 ▨ Peat
 ● 2015 Fires Hot Spots
 ● 2016 Fires Hot Spots
 ● FORMA alerts
 Background satellite images are Landsat 8



suppliers as well as our sustainable palm oil policy. We support our third party suppliers in taking these steps. Oil already shipped (in-transit) or delivered by our third party suppliers prior to their decision to dis-engage from Korindo, may still contain oil from Korindo and therefore could be present in our supply chain and in any conventional and RSPO Mass Balance (MB) products produced in our refineries. With the decision to stop sourcing from Korindo, the chance of Korindo oil being present in our supply chain will be reduced to zero over time.²³¹

Trader statements

An August 2016 report by Aidenvironment reported that Wilmar and Musim Mas have stopped sourcing from Korindo, in June and July respectively.²³² Wilmar has confirmed, to Greenpeace and on its grievance dashboard,²³³ that it has put on hold purchasing; Musim Mas has initiated a ‘temporary stop-purchase’²³⁴ for Korindo while Tunas Sawa Erma has agreed to a three-month

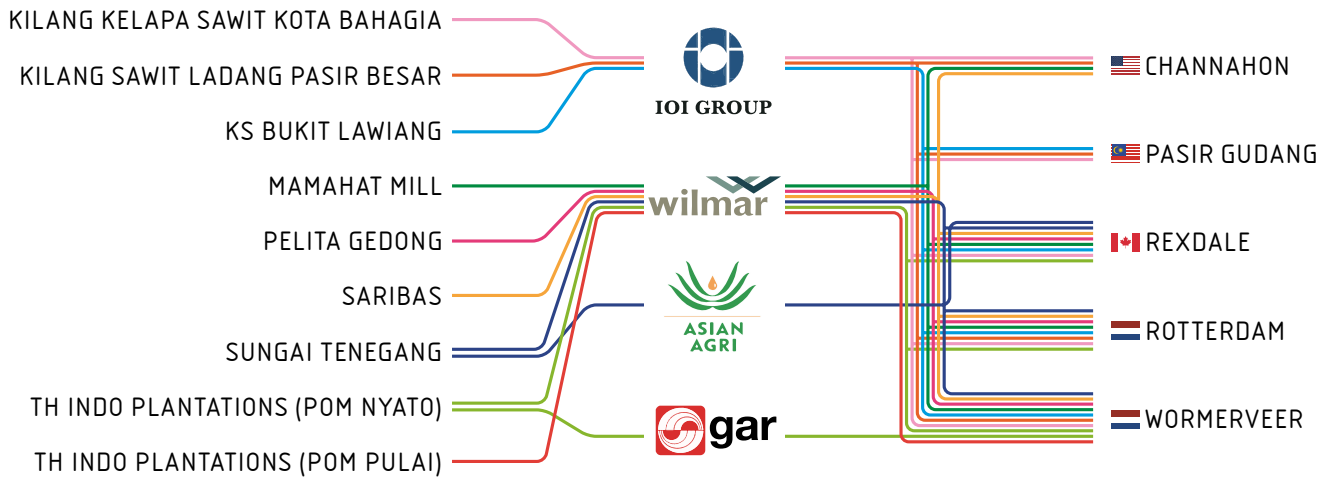
moratorium. Musim Mas continues to engage in dialogue with Korindo and encourages all stakeholders to do so as well.²³⁵

Company statement

Greenpeace contacted Korindo before publication to seek confirmation of its findings. On 23 September 2016, Korindo responded. It shared a briefing, ‘Clarification against the misinformation about Korindo’, dated 23 September 2016, ‘to provide objective evidence explaining as to why the statements made in the [Aidenvironment/Mighty] report are not at all acceptable’. In this briefing, it claims: ‘Korindo has been practicing ‘No Deforestation, No Peat, No Exploitation’, in compliance with all palm plantation related regulations of the Indonesian government.’²³⁶

On evidence of extensive or deliberate fire, it stated: ‘Korindo has never committed arson or even attempt to do so in its own oil palm plantation for the land clearing purpose or for any other reason.’²³⁷

TH PLANTATIONS/ LEMBAGA TABUNG HAJI



IOI's Sustainability Policy

All provisions in this policy apply to all third-party suppliers in our supply chain.

- Ensure no deforestation of high conservation value (HCV) areas and high carbon stock (HCS) areas.
- Protect peat areas regardless of depth in new developments.

Dato' Lee Ychow Chor
IOICEO



TH Plantations is the plantation arm of Lembaga Tabung Haji,²³⁸ the Malaysian Pilgrims' Fund, a government-owned investment body set up to facilitate Malaysians saving to make the pilgrimage to Mecca.²³⁹ The fund is a national institution with around 8.6 million depositors.²⁴⁰

Violations of IOI policy

- **Deforestation:** satellite deforestation alerts show forest clearance from early 2015 (PT Persada Kencana Prima, North Kalimantan)
- **Peat:** clearance of deep peatland in a priority peat landscape (PT Persada Kencana Prima, North Kalimantan)

Links to IOI

From Q2 2015 through Q1 2016, IOI Loders Croklaan purchased palm oil or palm kernel oil directly from TH Plantations mills in Malaysia: Kilang Kelapa Sawit Kota Bahagia, Kilang Sawit Ladang Pasir Besar and KS Bukit. IOI Loders Croklaan also shows purchases from TH Plantations via AAA/APICAL (Sungaitenegang²⁴¹), Wilmar (Mamahat Mill,

Pelita Gedong, Saribas, TH Indo Plantations POM Nyato, TH Indo Plantations POM Pulau²⁴²) and GAR (TH Indo Plantations POM Nyato). IOI Loders Croklaan uses this crude palm oil and/or palm kernel oil in its refineries in Pasir Gudang, Channahon, Rexdale, Rotterdam and Wormerveer.²⁴³

Group overview

Company: TH Plantations Berhad

Group: Lembaga Tabung Haji

Headquarters: Malaysia

Stocklisted: Malaysia Stock Exchange

RSPO member: No - previously a member but left

sometime after October 2012, when the company was listed as not having submitted its ACOP²⁴⁴

Plantations

TH Plantations is the plantation arm of Lembaga Tabung Haji.

In Malaysia and Indonesia, TH Plantations has 104,500ha licensed, 59,300ha of which are planted.²⁴⁵ In Indonesia, TH Plantations acquired 93% ownership in PT Persada Kencana Prima (PT PKP) in 2013;²⁴⁶ PT PKP covers 11,400ha and is not yet in production.²⁴⁷

TH Plantations produced 797,600 tonnes of FFB in 2015.²⁴⁸

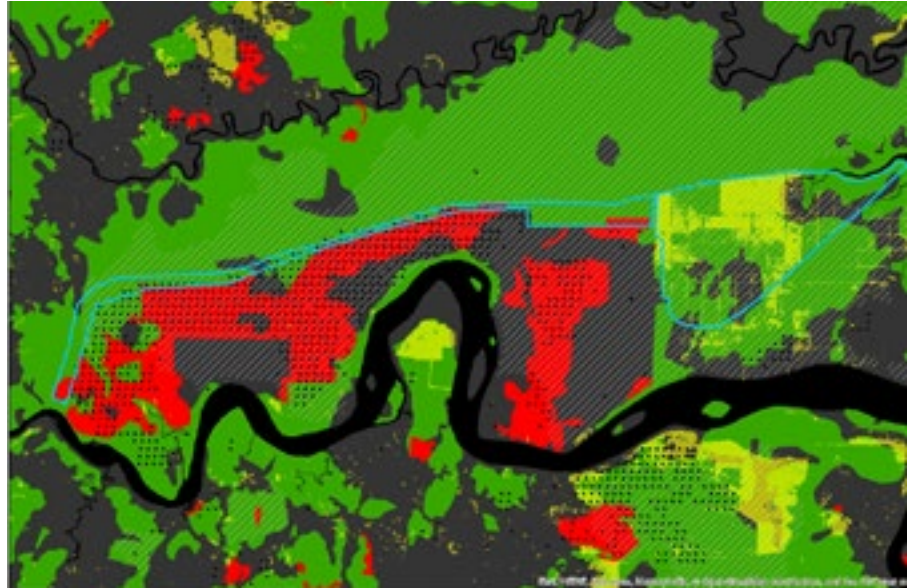
Other group interests include rubber and timber.

Environmental position

TH Plantations has no formal environmental policy available on its website or mentioned in its annual report.

A zero-burning policy is in place.²⁴⁹ The environmental section of the company's 2015 Annual Report does not mention forest conservation. The company is not a member of the RSPO and does not produce information equivalent to RSPO reporting standards.

Map:
 ● Forest cover 2013
 ● Forest cover 2011
 ○ Concession boundary
 ■ Deforestation 2011-2013
 ▨ Peat
 ● GLAD alerts
 2016 Fires Hot Spots
 ● FORMA alerts
 Background satellite images
 are Landsat 8



21 March 2016, PT Persada
Kencana Prima:
3°42'06"N 117°03'50.36"E
An excavator at work.
©Aidenvironment



CASE STUDY: PERSADA KENCANA PRIMA

Concession name: **PT Persada Kencana Prima**

Location: **North Kalimantan**

Policy violation

- Recent deforestation and development of peatland place TH Plantations in violation of IOI's policy.

Mapping analysis from Kepo Hutan and Global Forest Watch

- Nearly all of the concession (around 10,000 hectares) is on peat. Most of the concession was mapped as secondary forest in 2013.
- GLAD alerts show extensive clearance ongoing in PT Persada Kencana Prima from early 2015, with clear plantation block preparation.

Peat

The area of North Kalimantan contains large contiguous areas of peat, including areas of peat forest. Such landscapes are a priority for conservation, but concessions represent an immediate threat.

The PT Persada Kencana Prima concession is not yet in production.

IOI statement

'[TH Plantations was] already reported in the list of grievances of our third party suppliers which is monitored by our sustainability department. We have also requested our third party suppliers for an update. IOI Group does source directly from TH Plantations. TH plantations were classified as a high priority mill following our risk

assessment and we have approached TH plantations for an on-site mill verification. So far TH plantations have refused to collaborate. IOI will continue to engage with TH plantations to push for a verification visit and address the issues. In the meantime we will phase out TH plantations from our supply chain.'²⁵⁰

Trader statements

In emails to Greenpeace on 20 September 2016, GAR, Musim Mas and Wilmar all confirmed ongoing commercial relationships with TH Plantations.²⁵¹ Wilmar indicated that it is engaging the company on reports of clearance and has escalated dialogue to top management, though this does not appear on the Wilmar grievance dashboard.²⁵² Musim Mas gave no indication whether it has engaged with TH Plantations regarding potential land clearance, and there is nothing on the Musim Mas grievance dashboard.²⁵³ Musim Mas also stated that the company does not buy from TH Plantations operations in Kalimantan, suggesting a failure to enforce compliance at a group level. GAR stated that the case studies raised here are new to the company. In an email to Greenpeace on 23 September, AAA/Apical replied with the general statement that 'Based on our records and preliminary investigations, Apical does not currently buy from any of the mills in the list you presented to us'²⁵⁴ which suggests that the company is not proactively monitoring suppliers at group level; the company also stated that its records showed no palm oil purchase from TH Plantation, but requests Greenpeace share the names of the mills so it can investigate.

Company statement

Greenpeace contacted TH Plantations before publication to seek confirmation of its findings. At the time of publication, Greenpeace had received no response from the company.

'FAILURE OF COMPANIES TO SUBMIT NPPS OR COMPENSATION PROPOSALS FOR PUBLIC CONSULTATION PRIOR TO DEVELOPMENT

Goodhope has submitted a number of NPP recently, which are currently undergoing review from the RSPO Secretariat before being published.

We have not received an NPP notification from Eagle High to date. We are still checking the submissions of Austindo and Indofood.

Austindo (PT Pusaka Agro Makmur) sent a NPP notification in January 2015. They have been later advised by the RSPO Secretariat to review the submission (25/2/2015) and re-do the HCV assessment. For Indofood (Lonsum) NPP notifications were posted on 30/5/2016 and 17/6/2016.

EXTENSIVE FIRES

Your letter states that data indicate extensive fires in concessions owned by Eagle High, Indofood and IOI, and this raises questions of mismanagement. At this point in time, we can only respond that such incidences can trigger complaints and will be investigated according to the procedures.

HUMAN RIGHTS ISSUES

The RSPO condemns all human right abuses by its members, in violation of its P&C. However, in order to act on the three alleged cases mentioned above, more specific information are required. If the implicated area is certified, the Certification Body will investigate. We invite Greenpeace to provide more detailed information and substantial evidence on these cases. In relation to the use of security forces, the RSPO P&C prohibit use of paramilitary forces.'

RSPO response to Greenpeace, 24 September 2016

20 May 2014, PT TH Indo Plantations:
0°8'48"N 102°58'49"E

Scorched trees and clearance to a small river inside the oil palm concession in Indragiri Hilir, Riau, which was formerly a subsidiary of Lembaga Tabung Haji.

©Ifansasti/Greenpeace

CONCLUSION: TIME FOR TRADER ACTION ON THIRD-PARTY SUPPLIERS

Despite numerous commitments to end deforestation and resolve conflicts, this report identifies continued serious environmental and social problems in the global palm oil supply traded to IOI by companies including GAR, Musim Mas and Wilmar. Responsibility for change lies with these traders and with IOI, who are failing to proactively monitor their supply base or to exclude noncompliant suppliers. This complacency means that the global palm oil market continues to fuel forest destruction and human rights abuses.

IOI's responses to the issues with its suppliers detailed in this report indicate that it has deferred responsibility for addressing the problems to the intermediate traders, asking them to engage on its behalf. The only exception regards IOI's relationship with TH Plantations, from which IOI directly sources. IOI's stated that have approached TH Plantations for an on-site mill verification,' but '[S]o far TH plantations have refused to collaborate.'²⁵⁵ This misses the point that TH Plantations' violations of IOI's sustainability policy are not at the mill IOI purchases from, but at a group level. IOI does state that it 'will phase out TH Plantations from our supply chain'.

Greenpeace contacted the three major traders supplying IOI to discuss the third-party supply issues raised in this report. Their responses show different degrees of policy enforcement. None appears to have a proactive policy of monitoring suppliers at group level to assess compliance with NDPE policies. These traders seem most proactive when the problematic operations are directly in their supply base, while violations elsewhere within a supplier group lead to 'engagement' or seeming inaction; one trader responded to the problems with these suppliers simply by noting that those operations were 'not linked' to its supply base. Some traders have a system for stakeholders such as NGOs to register problems with suppliers, but these systems are largely inaccessible to communities and workers, and some traders seem to permit indeterminate engagement with no clear outcomes. And responsibility for action on some of these cases seems left with others, such as the RSPO.

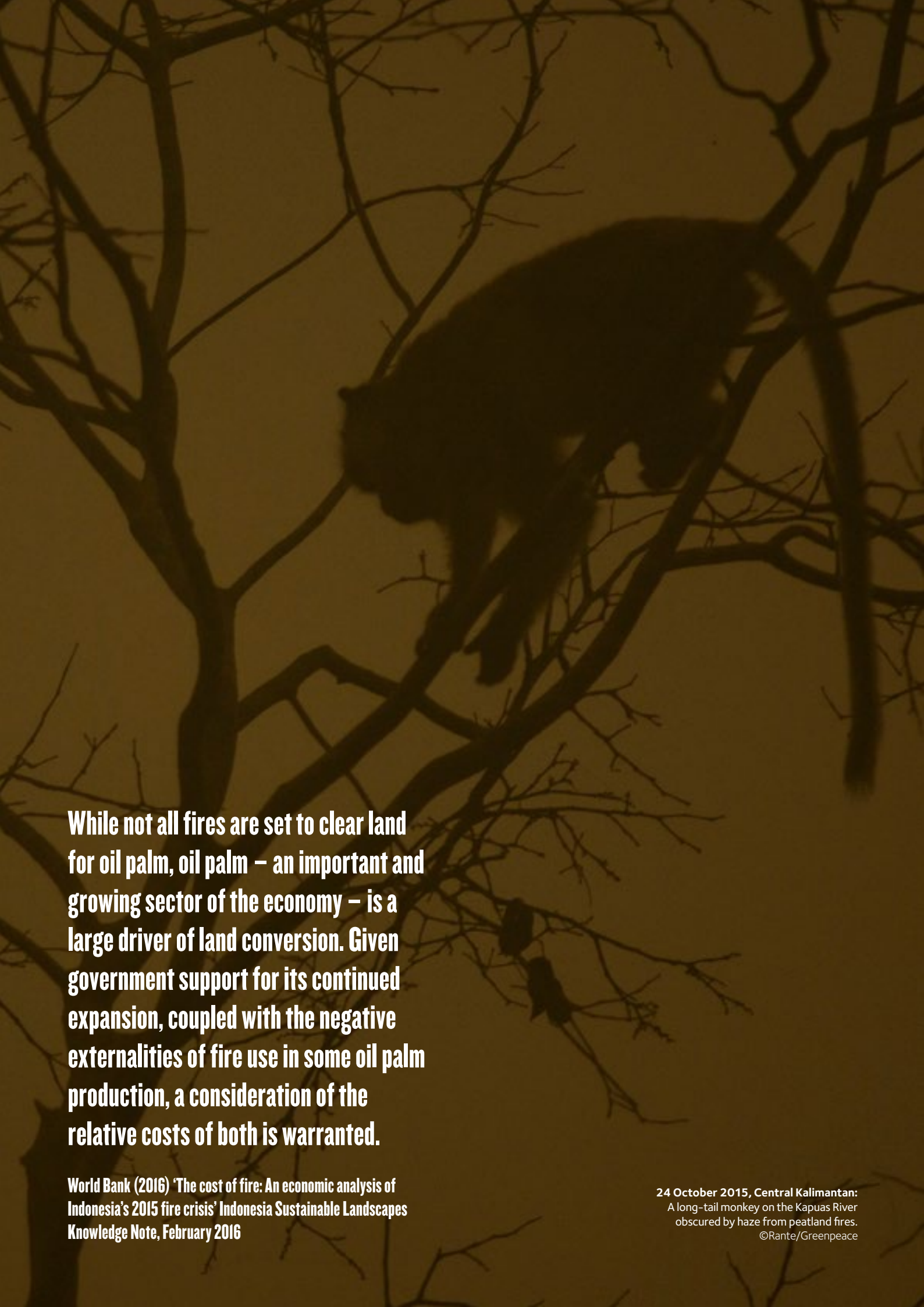
It is important to note that the RSPO standards do not exclude deforestation or peatland development. Many companies in this report are members of the RSPO, despite the clear and public evidence that they are failing to adhere to even a basic interpretation of sustainability. Further, the RSPO process does not absolve companies from responsibility for monitoring and enforcement across all operations of their suppliers. As shown by the Indofood case, where egregious labour issues are documented

on RSPO-certified plantations, buyers focused on purchasing only RSPO-certified palm oil or reacting only to RSPO suspension will miss the problem. A major overhaul of the standards and enforcement of the RSPO is urgently needed.

While the approach of implementation partners and consultants including The Forest Trust or Proforest can provide traders with valuable visibility and insight into their supply chains, the risk assessments that underpin their work must always be combined with proactive monitoring at group level, accelerating independent third-party auditing (to standards such as the Palm Oil Innovation Group (POIG)) and clear unequivocal demands for compliance that carry the consequence of exclusion.

Indonesia's plantation sector must be made more transparent. This requires progressive producers and traders to drive change through their supply chains. A good deal of information is already out there, including satellite analysis of deforestation and land-use change, and best available concession maps such as those on Greenpeace's 'Kepo Hutan' website. However, companies do not know as much about their suppliers' operations as they should. It should be in the interests of progressive producers and traders to work with civil society to push land tenure and supply chain data into the public domain. Their failure to use the available data shows complacency at best. The decision of the RSPO to not keep New Planting Procedure (NPP) documents publicly available longer than 30 days further undermines efforts of civil society to monitor.

Ultimately, the solution for palm oil, as well as the environment and people impacted by the sector, lies with joint action by industry. Responsible companies must start working together, to the same standards, using the same tools, to identify and exclude rogue players. The Indonesian Palm Oil Pledge (IPOP), signed by several of the biggest palm oil traders and growers at the UN Climate Summit in New York in 2014, was one forum through which to do this. However, IPOP was disbanded earlier this year following sustained pressure from government ministers and those palm oil companies that stood to lose from the widespread adoption of strong environmental and social standards.²⁵⁶ Another collaborative solution will need to be found; in the meantime, producers and their customers should make up for lost time by cooperating with other stakeholders in their supply areas to protect and restore forest and peat landscapes including wildlife habitat that would otherwise be at risk of drainage, encroachment, fires or plantation development.

A long-tail monkey is perched on a tree branch, its body and tail silhouetted against a hazy, brownish background. The monkey is facing left, and its long tail hangs down. The tree branches are bare and intricate, creating a complex web of lines across the frame. The overall atmosphere is one of environmental impact and loss of habitat.

While not all fires are set to clear land for oil palm, oil palm – an important and growing sector of the economy – is a large driver of land conversion. Given government support for its continued expansion, coupled with the negative externalities of fire use in some oil palm production, a consideration of the relative costs of both is warranted.

World Bank (2016) 'The cost of fire: An economic analysis of Indonesia's 2015 fire crisis' Indonesia Sustainable Landscapes Knowledge Note, February 2016

24 October 2015, Central Kalimantan:
A long-tail monkey on the Kapuas River
obscured by haze from peatland fires.
©Rante/Greenpeace

DEMANDS

IOI should urgently review its own sustainability commitments and:

- 1. Suspend contracts** with all groups named in this report pending credible evidence of group-level compliance with NDPE policies.
- Achieve an **immediate moratorium** on the destruction of forests and peatlands across its operations, including those of its third-party suppliers.
- Publish an ambitious time-bound plan with a deadline for **third-party verification** of compliance and **termination of non-compliant suppliers**.
- Adopt a meaningful **landscape approach** to mitigate the impact of its operations on forests and peatlands across its supply chain, starting with its four concessions in Ketapang.
- Develop and implement a plan for extensive **restoration of the forests and peatlands** that it has destroyed.
- Resolve outstanding grievances**, including successfully concluding its six year dispute with the longhouse communities of Long Teran Kanan (LTK) in Sarawak by recognizing their rights to their customary lands, determined through community mapping, and re-negotiating the company's access and use of these lands subject to the Free, Prior and Informed Consent of the LTK and neighboring communities.
- Uphold the rights of workers** and tackle exploitative employment and trafficking of migrant workers documented in its operations.
- Ensure transparent reporting backed by independent auditing of progress and **publish concession maps, HCS and HCV assessments**, a complete list of suppliers, and reporting on supplier compliance with its policies.

To ensure their palm oil is not contributing to deforestation, forest fires, peatland degradation or human rights abuses, all traders, producers and processors must:

- 1. Implement an immediate moratorium on all new plantation development and expansion.** Conduct HCV and HCS assessments (using the High Carbon Stock Approach methodology) to identify and protect all remaining forest and other socially or ecologically important areas. Require all third-party suppliers to do likewise and develop an ambitious time-bound plan for phasing out non-compliant suppliers.
- 2. Map out all peatland landscapes affected by their own operations and third-party suppliers** using appropriate technology and make this data publicly available. Re-flood and implement other water management measures to ensure protection of peatland forest and to mitigate fire risks, based on mapping and advice from independent peat experts.
- Commit to establish and/or participate in **multi-stakeholder partnerships** within priority forest and peatland landscapes impacted by the company's supply chain.
- 4. Publish all concession maps** for their own operations through Global Forest Watch's online forest monitoring and alert system. Require all suppliers to publish concession maps covering their entire operations, prioritising high-risk areas, by end 2016. Commit to inserting transparency clauses in new contracts and to start phasing out producers who do not comply.
- Use the best available data on forests, peatlands, community conflicts and labour risk, including concession maps, to **proactively monitor suppliers** on a group level. Identify priority groups and initiate grievance procedures to deliver time-bound action plans for these companies. Exclude any company found to be clearing forest, developing areas affecting peatlands or violating human rights.
- 6. Engage auditors** to conduct an independent assessment of social and labour conditions in their palm oil concessions in Malaysia and Indonesia. **Resolve outstanding grievances** in a transparent manner to the satisfaction of the affected stakeholders and local communities.
- 7. Suspend contracts** with all groups named in this report pending credible evidence of group-level compliance with NDPE policies.



**25 October 2015,
Central Kalimantan:**
Long-tail monkeys on a sacred
island in the Kapuas river.
©Rante/Greenpeace

ACRONYMS

ACOP	Annual Communication of Progress (from companies to the RSPO)
ANJ	Austindo Nusantara Jaya
CPO	crude palm oil
FDA	Food and Drug Administration
FFB	fresh fruit bunches
FGV	Felda Global Ventures
FPIC	free, prior and informed consent
GAR	Golden Agri-Resources
ha	hectare
HCS	high carbon stock
HCV	high conservation value
ICOF	Inter-Continental Oils and Fats
ILO	International Labour Organisation
ILRF	International Labor Relations Forum
ISCC	International Sustainability and Carbon Certification
km	kilometres
m	million
MoEF	Ministry of Environment and Forestry, Indonesia (Kementerian Lingkungan Hidup dan Kehutanan)
Mt	million metric tonnes
NDPE	No Deforestation, No Peat, No Exploitation
NGO	non-governmental organisation
NPP	New Planting Procedure (report to RSPO)
P&C	Principles and Criteria
PHO	partially hydrogenated oils
PKO	palm kernel oil
RAN	Rainforest Action Network
RBD	refined, bleached and deodorised
RSPO	Roundtable on Sustainable Palm Oil
UN	United Nations
US	United States

Note:
For the purpose of this report, Greenpeace stands for Greenpeace International except where otherwise stated.

MAPPING ANALYSIS

Mapping analysis not otherwise referenced was done using Greenpeace's online public 'Kepo Hutan' platform and either visual assessment or the analysis tool.

Main data sources include:

Landcover: MoEF (2015)

Peat areas: Ritung et al (2011). Note that use of this map does not imply endorsement of its accuracy, merely that it is the map currently available for use on public online platforms.

Oil palm concessions 2016: Compiled by Greenpeace based on agriculture plantation maps provided by the Planning Department of the Ministry of Forestry, Indonesia, downloaded on 29 July 2010 (appgis.dephut.go.id/appgis/kml.aspx), supplemented and updated by Greenpeace in several provinces with data gathered from provincial agencies (BPN/BAPPEDA) and corporate submissions to eg the RSPO.

GLAD alerts: This data set, created by the Global Land Analysis & Discovery (GLAD) lab at the University of Maryland and supported by Global Forest Watch, is the first Landsat-based alert system for tree cover loss. While most existing loss alert products use 250-metre-resolution MODIS imagery, these alerts have a 30-metre resolution and thus can detect loss at a much finer spatial scale. The alerts are currently operational for Peru, the Republic of Congo and Kalimantan in Indonesia, and will eventually be expanded to the rest of the humid tropics. Sources: GLAD/UMD, accessed through Global Forest Watch; Hansen et al (2016).

Fire hotspots: NASA (2016)

FORMA alerts: FORMA data indicate the number of areas with a greater than 50% probability of recent tree cover loss. at 500mx500m resolution. The alerts are not a measure of deforestation by area. Sensitivity of detection is affected by factors including persistent cloud cover and flooding. For full explanation of the nature of the data see: http://data.globalforestwatch.org/datasets/550bd7fc2c5d45418e5e515ce170da22_3

Mills: Greenpeace obtained IOI Lodders Croklaan's traceability data from the dashboard on its website (<http://europe.ioiloders.com/taking-responsibility/list-of-mills/>). The dashboard is available with a registered login, which was obtained with a Greenpeace email address and personal information. The information provided shows for each mill the parent company of the mill, RSPO certification status and supply chain model, and sourcing origin, containing both name of trader and a non-standardized category of collection points. The data covers Q2 2015 through Q1 2016 and represents, as of April 2016, 95% of its volume. Greenpeace makes no claim that this reflects current purchasing patterns, only sourcing linkages through April 2016. Any errors in the data are the responsibility of IOI Lodders Croklaan.

Other mapping: Global Forest Watch interactive map, www.globalforestwatch.org including tree plantation data from: Transparent World (2015)

REFERENCES

- Abubar M (2013) 'Derita buruh sawit Rajawali Group di Papua: Protes beban kerja berbuah pemecatan' 25 September 2013 Mongabay Indonesia <http://www.mongabay.co.id/2013/09/25/derita-buruh-sawit-rajawali-group-di-papua-protas-beban-kerja-berbuah-pemecatan/>
- Accreditation Services International (2016) 'ASI final assessment report RSP0 accreditation program' 5 September 2016 <http://www.accreditation-services.com/document/asi-rspo-sai-pc-compliance-indonesia-2016/>
- Aidenvironment (2015) 'Palm oil sustainability assessment of Indofood Agri Resources' September 2015 https://d3n8a8pro7vnmx.cloudfront.net/rainforestactionnetwork/pages/14786/attachments/original/1442856231/Full_Report_Palm_Oil_Sustainability_Assessment_of_Indofood_Agri_Resources.pdf?1442856231
- Aidenvironment (2016) 'Burning paradise: The oil palm practices of Korindo in Papua and North Maluku' 1 September 2016, commissioned by Mighty, the Korea Federation for Environmental Movements, SKP-KAMe Merauke and PUSAKA <http://www.aidenvironment.org/wp-content/uploads/2016/09/2016-08-25-FINAL-Korindo-report-English.pdf>
- Arief H (2012) 'Diversity of animals in oil palm plantation area and status protection: Case study in Zone Management Unit PT. Tandan Sawita Papua, Keerom Regency, Papua' Media Konservasi 17(2) August 2012 [https://www.academia.edu/10501573/Media_Konservasi_Vol.17.No.2_Agustus_2012](https://www.academia.edu/10501573/Media_Konservasi_Vol.17_No.2_Agustus_2012)
- awasmIFEE (2013) 'Korindo' last updated 2 August 2013 https://awasmifee.potager.org/?page_id=156
- awasmIFEE (2014) 'Violence and intimidation from PT Nabire Baru's Brimob guards continues' 10 August 2014 <https://awasmifee.potager.org/?p=1025>
- Bintang Papua (2011) '3 m² tanah adat senilai sepotong pisang goreng' 29 March 2011 <http://elshamnewsservice.blogspot.com/2011/03/3-m2-tanah-adat-senilai-sepotong-pisang.html> (article no longer available at Bintang Papua site)
- Bloomberg website 'Company overview of PT Rajawali Corporation' <http://www.bloomberg.com/research/stocks/private/snapshot.asp?privcapId=22353221> accessed 14 September 2016
- Bukit Darah PLC (2015) 'Annual Report 2014/15' <http://www.carsoncumberbatch.com/investor-information/annual-reports-2014-2015/bukit-darah-ar-2014-15.pdf>
- Burrows D (2016) 'Major brands dump palm oil supplier IOI following RSP0 suspension' 7 April 2016 FoodNavigator <http://www.foodnavigator.com/Market-Trends/Major-brands-dump-palm-oil-supplier-IOI-following-RSP0-suspension>
- Butler R (2014) 'Palm oil company clears rainforest in Indonesia' 29 July 2014 Mongabay <http://news.mongabay.com/2014/0729-anjt-palm-oil-new-guinea.html>
- Carson Cumberbatch PLC (2015) 'Annual Report 2014–15' <http://www.carsoncumberbatch.com/investor-information/annual-reports-2014-2015/carson-cumberbatch-plc-ar-2014-15.pdf>
- Carson Cumberbatch website <http://www.carsoncumberbatch.com>
- Carson Cumberbatch website 'Our history' <http://www.carsoncumberbatch.com/about-us/our-history.php> accessed 14 September 2016
- Cenderawasih Pos (2015) 'Kehabisan darah, karyawan perkebunan kelapa sawit tewas' 22 December 2015 http://www.cenderawasihpos.com/index.php?mib=berita_detail&id=8744
- Chain Reaction Research (2014) 'Initial risk analysis: BW Plantation Tbk. [Now PT Eagle High Plantations Tbk.]' 19 November 2014 <http://chainreactionresearch.com/reports/bw-plantation/>
- Chain Reaction Research (2016) 'Palm oil revenue at risk: Failure to meet buyers' procurement policies results in lost revenue' June 2016 <https://chainreactionresearch.files.wordpress.com/2016/06/suspension-analysis-crr-june-9-2016-final.pdf>
- Colchester M, T Jalong and WM Chuo (2013) 'Chapter 9: Sarawak: IOI-Pelita and the community of Long Teran Kanan community' in Conflict or Consent ed. Forest Peoples Programme, Sawit Watch and TUK Indonesia <http://www.forestpeoples.org/topics/palm-oil-rspo/publication/2013/conflict-or-consent-chapter-9-sarawak-ioi-pelita-and-community>
- Confectionery Production (2013) 'Loders Crokiaan to supply coconut oil' Confectionery Production 78(10) February 2013 p34 <http://www.confectioneryproduction.com/8687/news/loders-crokiaan-to-supply-coconut-oil/>
- Danubrata E and E Chow (2016) 'Malaysia's Felda to re-attempt Indonesian deal with unlisted unit – sources' 11 February 2016 Reuters <http://www.reuters.com/article/indonesia-sondakh-idUSL3N15I090>
- Down to Earth (2014) 'Women and oil palm in an investment region' October 2014. <http://www.downtoearth-indonesia.org/story/women-and-oil-palm-investment-region>
- Esslemont T (2016) 'Malaysia palm oil giant says used as "scapegoat" as green standards ramp up' 7 June 2016 Reuters <http://uk.reuters.com/article/us-indonesia-palmoil-forests-idUKKCN0YT2HZ>
- Environmental Investigation Agency and Telepak (2009) 'Up for Grabs: Deforestation and exploitation in Papua's plantations boom' December 2009 <https://eia-international.org/wp-content/uploads/up-for-grabs.pdf>
- Fransiskan Papua (2014a) 'Buruh tuntutan hak berarti diproses di kepolisian' 21 May 2014 <https://awasmifee.potager.org/?p=850&lang=id> (article no longer available at original URL, <http://www.fransiskanpapua.net/2014/05/1349/upah-buruh-menunggu-kebijakan-bupati-jayapura.php>)
- Fransiskan Papua (2014b) 'PT Tandan Sawita Papua: Potret kenistaan perusahaan sawit kepada masyarakat' 23 May 2014 <https://awasmifee.potager.org/?p=853&lang=id> (article no longer available at original URL, <http://www.fransiskanpapua.net/2014/05/1345/potret-kenistaan-perusahaan-sawit-kepada-masyarakat.php>)
- Global Forest Watch interactive map <http://www.globalforestwatch.org>
- Gobai J (2016) 'Siaran pers: Koalisi peduli korban sawit Nabire' 25 March 2016 Konsorsium Pembaruan Agraria <http://www.kpa.or.id/news/blog/siaran-pers-koalisi-peduli-korban-sawit-nabire/>
- Golden Agri-Resources Ltd website 'Grievance list' updated 8 September 2016 (accessible via the GAR sustainability dashboard at http://www.goldenagri.com.sg/sustainable_dashboard.php viewed 21 September 2016)
- Goodhope Asia Holdings Ltd (2015) 'RSP0 Annual Communications of Progress 2015' <http://www.rspo.org/file/acop2015/submissions/goodhope%20asia%20holdings%20ltd.-ACOP2015.pdf>
- Goodhope Asia Holdings Ltd website 'Edible oils & fats' <http://www.goodhopeholdings.com/business-sectors/edible-oils-and-fats> accessed 21 September 2106
- Goodhope Asia Holdings Ltd website 'Environment' <http://www.goodhopeholdings.com/sustainability/environment#project1> accessed 21 September 2106
- Goodhope Asia Holdings Ltd website 'Subsidiaries' <http://www.goodhopeholdings.com/about-us/subsidiaries> accessed 21 September 2106

- Government of Indonesia (2009) 'Peta penutupan lahan Indonesia tahun 2990 / Land cover survey 2009' <http://webgis.dephut.go.id:8080/kemenhut/index.php/id/peta/peta-ctak/59-peta-ctak/268-peta-penutupan-lahan-indonesia-tahun-2009>
- Greenomics Indonesia (2014) "'Busy years" ahead until 2017: Spending US\$12 million on clearing Papua's intact forest landscapes' 21 July 2014 [http://www.greenomics.org/docs/ANJ-clearance-Papua-forest_\(LowRes\).pdf](http://www.greenomics.org/docs/ANJ-clearance-Papua-forest_(LowRes).pdf)
- Greenomics Indonesia (2015) 'Golden Agri-Resources, the biggest buyer of CPO produced by a company that is relentlessly clearing HCS forests in Papua' 20 May 2015 http://www.greenomics.org/docs/IPOP-Implementation_Report-02_Greenomics.pdf
- Greenpeace International (2004) 'Forest crime: Korindo and the trade in illegal plywood from the last rainforests of Indonesia' March 2004 <http://www.greenpeace.org.uk/files/pdfs/migrated/MultimediaFiles/Live/FullReport/6249.pdf>
- Greenpeace International (2008) 'How Unilever palm oil suppliers are burning up Borneo' April 2008 <http://www.greenpeace.org/international/PageFiles/24549/how-unilever-palm-oil-supplier.pdf>
- Greenpeace International (2015) 'Indonesia's forests: Under fire' November 2015 <http://www.greenpeace.org/international/Global/international/publications/forests/2015/Under-Fire-Eng.pdf>
- Greenpeace International (2016) 'Why IOI's destruction in Ketapang is a burning issue for the RSPO and the palm oil plantation sector' June 2016 <http://www.greenpeace.org/international/Global/international/publications/forests/2016/Burning%20Issue.pdf>
- Hanebora R (2014) 'Mengenal suku Yerisiam dan investasi sawit yang hadir di ulayatnya' 26 November 2014, updated 17 June 2015 http://www.kompasiana.com/robertinohanebora/mengenal-suku-yerisiam-dan-investasi-sawit-yang-hadir-di-ulayatnya_54f93604a3331169018b4a25
- Hanebora S (2013) 'Bekerja tanpa AMDAL dan lecehkan hak adat' 14 October 2013 Yerisiam News <http://sukuyerisiam.blogspot.com/2013/10/bekerja-tanpa-amdal-dan-lecehkan-hak.html>
- Hansen MC et al (2016) 'Humid tropical forest disturbance alerts using Landsat data' Environmental Research Letters 11(3) 2 March 2016 <http://iopscience.iop.org/article/10.1088/1748-9326/11/3/034008>
- IndoAgri (2016) 'Annual Report 2015' <http://indofoodagri.listedcompany.com/misc/ar2015.pdf>
- IndoAgri website 'Consumer branded products' <http://www.indofood.com/business/consumer-branded-products> viewed 14 September 2016
- IndoAgri website 'Palm oil sourcing policy' <http://www.indofoodagri.com/palm-oil-sourcing-policy.html> accessed 13 September 2016
- IndoAgri website 'Shareholders composition' <http://www.indofood.com/page/shareholders-composition> viewed 14 September 2016
- IndoAgri website 'Sustainable palm oil policy' <http://www.indofoodagri.com/palm-oil-policy.html> accessed 21 August 2016
- IOI Group (2012) 'IOI LC Americas unveils western hemisphere's largest palm oil refinery' Berita IOI 54 Apr-June 2012 <https://www.ioigroup.com/Content/NEWS/PDF/BeritaIOI/Issue54.pdf>
- IOI Group (2014) 'Sustainability policy statement' (revised 15 December 2014) <http://www.ioigroup.com/Content/S/PDF/IOI%20Sustainability%20Policy%20Statement.pdf>
- IOI Group (2015a) 'Annual Report 2015' https://www.ioigroup.com/Content/IR/PDF/AnnualReport/Corp/2015_AR.pdf
- IOI Group (2015b) 'RSPO Annual Communications of Progress 2015' <http://www.rspo.org/file/acop2015/submissions/ioi%20group-ACOP2015.pdf> accessed 14 September 2016
- IOI Group (2016a) 'Sustainability implementation plan' 25 August 2016 <http://www.ioigroup.com/Content/S/PDF/SustainabilityImplementationPlan.pdf>
- IOI Group (2016b) 'Sustainable palm oil policy' (revised July 2016) <http://www.ioigroup.com/Content/S/PDF/Sustainability%20Palm%20Oil%20Policy.pdf>
- IOI Lodders Croklaan (2014) 'Sustainable palm oil policy' November 2014 http://europe.ioiloders.com/images/static_pages/141311_Sustainable_Palm_Oil_Policy.pdf
- IOI Lodders Croklaan (2015a) 'IOI Lodders Croklaan successfully obtains certification for its sustainable shea supply chain' 17 September 2015 <http://europe.ioiloders.com/news/ioi-lodders-croklaan-successfully-obtains-certification-for-its-sustainable>
- IOI Lodders Croklaan (2015b) 'Mapping the origin of our palm oil: Traceability report 2014-2015' October 2015 http://europe.ioiloders.com/images/static_pages/50508_Tracability_Report_V07_HR.pdf
- IOI Lodders Croklaan (2016) 'IOI on track to meet 100 percent traceability by end 2016' 8 September 2016
- IOI Lodders Croklaan website 'List of mills' <http://europe.ioiloders.com/taking-responsibility/list-of-mills/> accessed 21 September 2016, documents available publicly with registered login
- IOI Lodders Croklaan website 'Other oils' <http://northamerica.ioiloders.com/taking-responsibility/other-oils/> accessed 19 September 2016
- IOI Oleo website 'Company' <http://www.ioioleo.com/company-oleochemical.html> accessed 10 November 2015
- Ilsa A and Idris I (2016) 'Eagle High deal at final stage of conclusion' 28 July 2016 The Star <http://www.thestar.com.my/business/business-news/2016/07/28/eagle-high-deal-at-final-stage-of-conclusion/>
- Jacobson P (2015) 'GAR, Wilmar punish palm oil supplier for clearing rainforest in New Guinea' 28 May 2015 Mongabay <http://news.mongabay.com/2015/05/gar-wilmar-punish-palm-oil-supplier-for-clearing-rainforest-in-new-guinea/>
- Jakarta Globe (2016) 'Eagle High plantation secures rp 1.54t in loans from BNI' 9 September 2016 <http://jakartaglobe.beritasatu.com/business/eagle-high-plantation-secures-rp-1-54t-loans-bni/>
- Jayapura State Administrative Court (2016) 'Decision 22/G/2015/PTUN. JPR' 5 April 2016 <http://putusan.mahkamahagung.go.id/putusan/downloadpdf/3b7b9d7462ce23e0a514388dc98946a1/pdf>
- Koplitz S et al (2016) 'Public health impacts of the severe haze in Equatorial Asia in September-October 2015' Environmental Research Letters 11(9) 19 September 2016 <http://iopscience.iop.org/article/10.1088/1748-9326/11/9/094023>
- Lawson S (2015) 'Oil palm plantation development & forest fires in Southern Papua, September-October 2015' 19 November 2015 awasMIFEE <https://awasmifee.potager.org/?p=1332>
- Lembaga Tabung Haji (2015) 'Annual Report 2014' <https://cms-th.s3.amazonaws.com/Lembaga+Tabung+Haji+Annual+Report+2014.pdf>
- Lembaga Tabung Haji website <http://www.tabunghaji.gov.my/>
- Mawel B (2015) 'Izin usaha perusahaan sawit PT Nabire Baru sepihak' 4 December 2015 Tabloid Jubi <http://tabloidjubi.com/16/2015/12/04/izin-usaha-perusahaan-sawit-pt-nabire-baru-sepihak/>

- Maybank IB Research (2013) 'IOI Corporation: Postcards from the Windy City' 18 November 2013 <http://cdn1.iinvestor.com/my/files/dfgs88n/2013/11/18/1479382423--237285481.pdf>
- Minister of Agriculture (2007) 'Peraturan Menteri Pertanian nomor: 26/Permentan/OT.140/2/2007' 28 February 2007 <http://perundangan.pertanian.go.id/admin/file/Permentan-26-07.pdf> ('Licensing guidance for plantation business', English translation available at <http://faolex.fao.org/docs/pdf/ins72955.pdf>)
- MoEF (2015) National Forest Monitoring System (NFMS), Ministry of Environment and Forestry, Indonesia nfm.dephut.go.id/ArcGIS/rest/services/LandcoverRC_Upd/LandcoverRC_2013_Upd/MapServer accessed September 2015
- Mongabay Indonesia (2013) 'Sawit masuk Nabire proses AMDAL mulai kala hutan sudah terbabat' 31 May 2013 <http://www.mongabay.co.id/2013/05/31/sawit-masuk-nabire-proses-amdal-mulai-kala-hutan-sudah-terbabat-bagian-3/>
- Mucholik I (2016) 'Gugatan NO, suku Iworo siap gugat PT PPM kembali' 27 July 2016 Teropong News <http://www.teropongnews.com/berita/gugatan-no-suku-iworo-siap-gugat-ppm-kembali/>
- Musim Mas (2016a) 'Commitment towards supporting suppliers through their sustainability journey' 2 September 2016 <http://www.musimmas.com/news/general-news/2016/commitment-towards-supporting-suppliers-through-their-sustainability-journey> accessed 20 September 2016
- Musim Mas (2016b) 'Tunas Sawa Erma: A moratorium on development with immediate effect' 9 August 2016 <http://www.musimmas.com/news/general-news/2016/tunas-sawa-erma-a-moratorium-on-development-with-immediate-effect>
- Musim Mas website 'Grievance list' <http://www.musimmas.com/sustainability/traceable-supply-chain/grievance-list> accessed 20 September 2016
- Mutu Certification International (2015) 'Pemberitahuan untuk Kegiatan Penilaian Sertifikasi ISPO di PT Tunas Sawa Erma – POP A dan POP B' 15 October 2015 <http://www.ispo-org.or.id/images/notifikasi/372Pengumuman%20Publik%20PT%20Tunas%20Sawa%20Erma%20-%20POP%20A%20dan%20POP%20B.pdf>
- NASA (2016) Fire Information for Resource Management System (FIRMS) <https://earthdata.nasa.gov/data/near-real-time-data/firms>
- Neslen A (2016) 'Korean palm oil firm accused of illegal forest burning in Indonesia' 1 September 2016 The Guardian <https://www.theguardian.com/environment/2016/sep/01/korean-palm-oil-firm-accused-of-illegal-forest-burning-in-indonesia>
- OPPUK, Rainforest Action Network and International Labor Relations Forum (2016) 'The human cost of conflict palm oil: Indofood, PepsiCo's hidden link to worker exploitation in Indonesia' July 2016 <http://www.ran.org/indofood>
- Orangutan Conservancy website 'Gunung Palung Orangutan Conservation Program' <http://www.orangutan.com/gunung-palung/>
- Pacific Pos (2015) 'Buruh sawit Keerom tewas ditembak oknum TNI' 22 December 2015 <https://www.pacificpos.com/headline/7087-buruh-sawit-keerom-tewas-ditembak-oknum-tni>
- Pogau O (2013) 'Tuntut pembayaran gaji ke perusahaan, Brimob aniyai warga sipil' 28 June 2013 Suara Papua <http://suarapapua.com/2013/06/tuntut-pembayaran-gaji-ke-perusahaan-brimob-aniyai-warga-sipil/> (no longer online at original URL, English translation still available at <http://westpapuamedia.info/2013/06/30/nabire-brimob-assaults-a-civilian-due-to-wage-demands/>)
- Procter & Gamble (2014) 'P&G sets new sustainability goal: No deforestation in its palm supply chain' 8 April 2014 news release <http://news.pg.com/press-release/pg-corporate-announcements/pg-sets-new-sustainability-goal-no-deforestation-its-palm-s>
- PT Austindo Nusantara Jaya Tbk (2015a) 'Annual Report 2014' http://anj-group.com/v2/wp-content/uploads/2015/04/ANJ_Laporan-Tahunan-2014-English-Version.pdf
- PT Austindo Nusantara Jaya Tbk (2015b) 'Consolidated financial statements 3Q15' <http://anj-group.com/v2/wp-content/uploads/2015/10/3Q15-Financial-Statements.pdf>
- PT Austindo Nusantara Jaya Tbk (2015c) 'RSPO Annual Communications of Progress 2015' <http://www.rspo.org/file/acop2015/submissions/pt.%20austindo%20nusantara%20jaya%20agri-ACOP2015.pdf>
- PT Austindo Nusantara Jaya Tbk (2016) 'Annual Report 2015' http://anj-group.com/v2/wp-content/uploads/2016/05/ANJ_Laporan-Tahunan-2015-English-Version.pdf
- PT BW Plantation Tbk (2013) 'RSPO Annual Communications of Progress 2013' <http://www.rspo.org/file/acop2013/submissions/PT%20BW%20PLANTATION%20TBK.pdf>
- PT Eagle High Plantations Tbk (2014) 'Annual Report 2014' http://eaglehighplantations.com/images/EHP_AR%202014_web.pdf
- PT Eagle High Plantations Tbk (2015a) 'Annual Report 2015' http://www.eaglehighplantations.com/images/PDF/annualreports/AR_2015_web.pdf
- PT Eagle High Plantations Tbk (2015b) 'RSPO Annual Communications of Progress 2015' <http://www.rspo.org/file/acop2015/submissions/pt.%20eagle%20high%20plantations%20tbk-ACOP2015.pdf>
- PT Eagle High Plantations Tbk website 'Sustainability policy' <http://eaglehighplantations.com/sustainability/sustainability-policy.html> accessed 31 August 2016
- PT Permata Putera Mandiri (2014) 'RSPO Notification of Proposed New Planting' 29 September 2014 <http://www.rspo.org/file/RSP0%20Notification%20of%20Proposed%20New%20planting%20-%20PT%20PPM.PDF>
- PT PP London Sumatra Indonesia (2014) 'RSPO Notification of Proposed New Planting, Pahu Makmur Estate and Kedang Makmur Estate' 22 December 2014
- PT Putera Manunggal Perkasa (2014) 'RSPO Notification of Proposed New Planting' 24 July 2014 [http://www.rspo.org/file/RSP0%20NOTIFICATION%20OF%20PROPOSED%20NEW%20PLANTING%20-%20PT%20Putera%20Manunggal%20Perkasa.%20\(Austindo%20Nusantara%20Jaya%20Aagri\)%20\(24%20July%202014\).pdf](http://www.rspo.org/file/RSP0%20NOTIFICATION%20OF%20PROPOSED%20NEW%20PLANTING%20-%20PT%20Putera%20Manunggal%20Perkasa.%20(Austindo%20Nusantara%20Jaya%20Aagri)%20(24%20July%202014).pdf)
- PT Salim Ivomas Pratama Tbk (2015) 'RSPO Annual Communications of Progress 2015' <http://www.rspo.org/file/acop2015/submissions/pt.%20salim%20ivomas%20pratama%20tbk-ACOP2015.pdf>
- PT Tandan Sawita Papua (2015) 'Communication on Progress to UN Global Compact' 28 January 2015 <https://www.unglobalcompact.org/participation/report/cop/create-and-submit/active/125591>
- Ritung S et al (2011) 'Peta lahan gambut Indonesia. Skala 1:250.000. Balai Besar Penelitian dan Pengembangan Sumberdaya Lahan Pertanian' prepared for online use by World Resources Institute
- RSPO (2012) 'ACOP submitter list' 27 September 2012 [http://www.rspo.org/file/Submitter%20List_05_10_2012\(1\).pdf](http://www.rspo.org/file/Submitter%20List_05_10_2012(1).pdf)
- RSPO (2016a) 'Complaints panel meeting minutes - Meeting No. 5/2016' 7 June 2016 <http://www.rspo.org/publications/download/5ef53fed860442b>
- RSPO (2016b) 'Complaints panel meeting minutes - Meeting No. 6/2016, 30 June 2016' <http://www.rspo.org/publications/download/500c14436a2bf80>

- RSPO (2016c) 'Notice to RSPO members on the suspension of IOI Group's certification' 1 April 2016 www.rspo.org/news-and-events/announcements/notice-to-rspo-members-on-the-suspension-of-ioi-groups-certification
- RSPO (2016d) 'Update on the status of IOI Group's certification' 5 August 2016 <http://www.rspo.org/news-and-events/announcements/update-on-the-status-of-ioi-groups-certification>
- RSPO website 'Case tracker | IOI - IOI Pelita Sdn Bhd' <http://www.rspo.org/members/complaints/status-of-complaints/view/4> accessed 20 September 2016
- RSPO website 'Status of complaints - Case tracker' <http://www.rspo.org/members/status-of-complaints/> viewed 24 September 2016
- RSPO website members page 'Goodhope Asia Holdings Ltd' <http://www.rspo.org/members/3466/Goodhope-Asia-Holdings-Ltd>
- RSPO website members page 'IOI Corporation Berhad' <http://www.rspo.org/members/62/IOI-Group> accessed 19 September 2016
- RSPO website members page 'PT Austindo Nusantara Jaya Agri' <http://www.rspo.org/members/150/pt-austindo-nusantara-jaya-agri> accessed 19 September 2016
- RSPO website members page 'PT Eagle High Plantations Tbk' <http://www.rspo.org/members/225/PT.-Eagle-High-Plantations-Tbk>
- RSPO website members page 'PT PP London Sumatra Indonesia Tbk' <http://www.rspo.org/members/23/PT-PP-London-Sumatra-Indonesia-Tbk>
- RSPO website members page 'PT Salim Ivomas Pratama Tbk' <http://www.rspo.org/members/197/PT-Salim-Ivomas-Pratama-Tbk>
- Suara Pusaka (2014) 'Brimob Nabire Baru intimidasi ketua koperasi bumiwi' 1 September 2014 Yayasan Pusaka <http://pusaka.or.id/brimob-nabire-baru-intimidasi-ketua-koperasi-bumiwi/> (English translation available at <https://awasmifee.potager.org/?p=1058>)
- Suara Pusaka (2015a) 'Dalam waktu 9 bulan, 4 warga jadi korban kriminalisasi dari lahan perkebunan sawit ANJ' 3 October 2015 Yayasan Pusaka <http://pusaka.or.id/dalam-waktu-9-bulan-4-warga-jadi-korban-kriminalisasi-dari-lahan-perkebunan-sawit-anj/> (English translation available at <https://awasmifee.potager.org/?p=1321>)
- Suara Pusaka (2015b) 'Demo PT. PPM: Warga menuntut keadilan ditahan Polresta Sorong' 17 May 2015 Yayasan Pusaka <http://pusaka.or.id/demo-pt-ppm-warga-menuntut-keadilan-ditahan-polresta-sorong/> (English translation available at <https://awasmifee.potager.org/?p=1220>)
- Suara Pusaka (2015c) 'Koalisi peduli korban sawit di Nabire desak bupati cabut ijin PT Nabire Baru' 2 February 2015 <http://pusaka.or.id/koalisi-peduli-korban-sawit-di-nabire-desak-bupati-cabut-ijin-pt-nabire-baru/> (English translation available at <https://awasmifee.potager.org/?p=1144>)
- Suara Pusaka (2015d) 'Marga Gue menggugat perusahaan kelapa sawit PT. PPM' 4 October 2015 Yayasan Pusaka <http://pusaka.or.id/marga-gue-menggugat-perusahaan-kelapa-sawit-pt-ppm/> (English translation available at <https://awasmifee.potager.org/?p=1321>)
- Suara Pusaka (2015e) 'Suku Yerisiam Gua gugat PT Nabire Baru dengan cara adat dan gugatan hukum' 30 October 2015 Yayasan Pusaka <http://pusaka.or.id/suku-yerisiam-gua-gugat-pt-nabire-baru-dengan-cara-adat-dan-gugatan-hukum/>
- Suara Pusaka (2015f) 'Warga Kampung Saga masih palang jalan PT. PPM' 6 March 2015 Yayasan Pusaka <http://pusaka.or.id/warga-kampung-saga-masih-palang-jalan-pt-ppm/> (English translation available at <https://awasmifee.potager.org/?p=1162>)
- Suara Pusaka (2016a) 'Brimob dan pembongkaran dusun sagu suku besar Yerisiam Gua' 13 May 2016 Yayasan Pusaka <http://pusaka.or.id/brimob-dan-pembongkaran-dusun-sagu-suku-besar-yerisiam-gua/> (English translation available at <https://awasmifee.potager.org/?p=1409>)
- Suara Pusaka (2016b) 'Kaya Agates, pohon leluhur yang kini terancam punah oleh ANJ Group PT Putra Manunggal Perkasa' 30 August 2016 <http://pusaka.or.id/kayu-agates-pohon-leluhur-yang-kini-terancam-punah-oleh-anj-group-pt-putra-manunggal-perkasa/>
- Supriyadi W (2016) 'Perkebunan sawit penyebab banjir di Kampung Sima dan Wauri' 7 April 2016 JERAT Papua <http://www.jeratpapua.org/2016/04/07/perkebunan-sawit-penyebab-banjir-di-kampung-sima-dan-wauri/>
- Tabloid Jubi (2015) 'Empat tahun, Brimob Sebabkan 15 kasus kekerasan di area kelapa sawit Nabire' 15 November 2015 <http://tabloidjubi.com/home/2015/11/15/empat-tahun-brimob-sebabkan-15-kasus-kekerasan-di-area-kelapa-sawit-nabire/> (no longer online at original URL)
- TH Plantations Berhad (2013) 'TH Plantations Group observes strict zero burning policy in Indonesian estates' 24 June 2013 media release http://www.thplantations.my/doc/mr/THP_20130624_Media%20Release_PTTHIP_final.pdf
- TH Plantations Berhad (2014) 'TH plantations reports FY2013 profit after tax of RM76.50 million' 26 February 2014 media release http://www.thplantations.my/doc/mr/THP-4Q13_Media%20Release.pdf
- TH Plantations Berhad (2016) 'Annual Report 2015' <http://ir.chartnexus.com/thplantation/doc/ar/ar2015.pdf>
- Transparent World (2015) 'Tree plantations' http://data.globalforestwatch.org/datasets/baae47df61ed4a73a6f54f00cb4207e0_5
- Unilever (2016a) 'Unilever responds to the RSPO decision to lift suspension of the IOI Group' 15 August 2016 <https://www.unilever.com/news/press-releases/2016/Unilever-reacts-to-palm-oil-suppliers-suspension-from-RSPO.html>
- Unilever (2016b) 'Unilever sustainable palm oil sourcing policy – 2016' https://www.unilever.com/Images/unilever-palm-oil-policy-2016_tcm244-479933_en.pdf
- Vit J (2016) 'Under gov't pressure, palm oil giants disband green pledge' 1 July 2016 Mongabay <https://news.mongabay.com/2016/07/under-government-pressure-palm-oil-giants-disband-green-pledge/>
- Wilmar website 'Grievance list with progress updates' updated 16 September 2016 http://www.wilmar-international.com/sustainability/wp-content/uploads/2016/09/160916_Grievance-update.pdf accessed 20 September 2016
- World Bank (2016) 'The cost of fire: An economic analysis of Indonesia's 2015 fire crisis' Indonesia Sustainable Landscapes Knowledge Note, February 2016 <http://pubdocs.worldbank.org/en/643781465442350600/Indonesia-forest-fire-notes.pdf>
- Yayasan Pusaka (2016) 'Pusaka PT Nabire Baru RSPO complaint' 19 April 2016 <http://www.forestpeoples.org/sites/fpp/files/news/2016/04/Pusaka%20PT%20Nabire%20Baru%20RSPO%20complaint%20-%20Eng%20Vrs.pdf>

ENDNOTES

- 1 Koplitz et al (2016). The study focused on adult mortality 'due to lack of knowledge on the effects of air pollution on child mortality' but acknowledged that 'impacts on children are likely significant'.
- 2 World Bank (2016) p2
- 3 53% in West Kalimantan, 51% in Riau. Source: Greenpeace International mapping analysis.
- 4 Greenpeace International mapping analysis.
- 5 Greenpeace International (2008) pp 14, 21–25
- 6 As detailed in Greenpeace International (2016) pp 6–7
- 7 Letter to Greenpeace Southeast Asia from IOI CEO Dato Lee, 26 August 2014
- 8 As detailed in Greenpeace International (2016) pp 6–7
- 9 IOI Loders Croklaan (2014)
- 10 IOI Group (2014) and IOI Group (2016b)
- 11 RSP0 (2016c)
- 12 RSP0 (2016d)
- 13 IOI Group (2016b)
- 14 IOI Group (2016a)
- 15 See eg Colchester, Jalong and Chuo (2013) and RSP0 website 'Case tracker | IOI – IOI Pelita Sdn Bhd'
- 16 IOI Group (2015b)
- 17 IOI Loders Croklaan (2015b) p5
- 18 IOI Loders Croklaan (2015b) p8
- 19 IOI Loders Croklaan (2014)
- 20 Eg IOI Group (2016b)
- 21 IOI Loders Croklaan website 'List of mills'
- 22 IOI Loders Croklaan website 'List of mills'
- 23 Burrows (2016)
- 24 Unilever (2016a)
- 25 Procter & Gamble (2014) and Unilever (2016b) p1
- 26 Email to Greenpeace from IOI, 22 September 2016
- 27 Esslemont (2016)
- 28 IOI Loders Croklaan (2015b) p8
- 29 IOI Group (2015b)
- 30 IOI Loders Croklaan (2015b) p5
- 31 IOI Group (2015a) p33
- 32 See eg RSP0 website members page 'IOI Corporation Berhad'
- 33 IOI Group (2015a) p33
- 34 Maybank IB Research (2013)
- 35 See IOI Group (2012). The facility undertook a major expansion in 2012.
- 36 Analysis of US customs records using ImportGenius, performed October 2015 and August 2016.
- 37 IOI Group (2015a) p23
- 38 IOI Loders Croklaan website 'Other oils'
- 39 Confectionery Production (2013)
- 40 IOI Loders Croklaan (2015a)
- 41 Analysis of US customs records performed by Greenpeace show imports from Acidchem Sdn Bhd to Davlyn Industries from 2013 through 2016.
- 42 IOI Oleo website 'Company'
- 43 IOI Group (2015a) p10
- 44 IOI Loders Croklaan website 'List of mills'
- 45 Since 26 February 2007; see RSP0 website members page 'PT Austindo Nusantara Jaya Agri'
- 46 PT Austindo Nusantara Jaya Tbk (2016) p26
- 47 PT Austindo Nusantara Jaya Tbk (2016) p12
- 48 PT Austindo Nusantara Jaya Tbk (2015b) pp8–9
- 49 PT Austindo Nusantara Jaya Tbk (2016) p47
- 50 PT Austindo Nusantara Jaya Tbk (2016) p22
- 51 PT Austindo Nusantara Jaya Tbk (2016) p107
- 52 Greenomics Indonesia (2014)
- 53 Butler (2014)
- 54 PT Austindo Nusantara Jaya Tbk (2015c) p4
- 55 PT Austindo Nusantara Jaya Tbk (2015c)
- 56 The concept of an Intact Forest Landscape (IFL), as mapped by the World Resources Institute (WRI), Greenpeace and Transparent World in 2000 and 2013, refers to 'an unbroken expanse of natural ecosystems within the zone of current forest extent, showing no signs of significant human activity, and large enough that all native biodiversity, including viable populations of wide-ranging species, could be maintained.' See <http://www.intactforests.org/index.html>.
- 57 Concession size from Ministry of Forestry Forest Estate Release data
- 58 HGU data included in PT Austindo Nusantara Jaya Tbk (2016) p49
- 59 Greenomics Indonesia (2014)
- 60 PT Austindo Nusantara Jaya Tbk (2016) p49
- 61 Greenomics Indonesia (2015)
- 62 PT Austindo Nusantara Jaya Tbk (2015a) p95
- 63 PT Permata Putera Mandiri (2014)
- 64 PT Putera Manunggal Perkasa (2014)
- 65 PT Austindo Nusantara Jaya Tbk (2016) p7
- 66 Landsat images from 11 April 2016, 16 July 2016 and 1 August 2016 appear to indicate that no further land clearing has taken place since at least December 2015. This may need further confirmation as the July and August images were partially obscured by cloud.
- 67 PT Austindo Nusantara Jaya Tbk (2016) p70
- 68 Chain Reaction Research (2016)
- 69 PT Permata Putera Mandiri (2014)
- 70 Suara Pusaka (2015f)
- 71 Suara Pusaka (2015d)
- 72 See Mucholik (2016). The grounds for inadmissibility were not stated in any media coverage of the trial.
- 73 Suara Pusaka (2015b)
- 74 Suara Pusaka (2015a)
- 75 Suara Pusaka (2016b)
- 76 PT Austindo Nusantara Jaya Tbk (2016) p107
- 77 PT Austindo Nusantara Jaya Tbk (2016), eg p7: 'While we feel it is prudent to slow development at this time, we continue to prepare the foundations for resuming growth in West Papua. This includes building a strong CSR program, actively establishing a new standard for Papua development with a range of external parties' involvement, including an independent consultant's assessment of our land use plan and integrating the development of our palm oil business with our nearby emerging sago business.' and p107: 'Having satisfied the RSP0 requirements we have begun to incorporate stricter standards and practices. [...] We are engaging in responsible development, not just sustainable palm oil production. We are doing this in a holistic manner and implementing the following: [...]
- Detailed social anthropological studies to better understand the needs of local Papuan communities;
- A sensible corporate social responsibility strategy, tailored to specific needs; and
- An appropriate array of livelihood programs taking into consideration gender issues.'
- 78 Email to Greenpeace from IOI, 22 September 2016
- 79 Jacobson (2015)
- 80 Email to Greenpeace from AAA/Apical, 23 September 2016
- 81 Email to Greenpeace from Musim Mas, 20 September 2016
- 82 ANJ (2016) 'ANJ response to Greenpeace inquiries 230916' 23 September 2016
- 83 ANJ (2016) 'ANJ response to Greenpeace inquiries 230916' 23 September 2016
- 84 ANJ (2016) 'ANJ response to Greenpeace inquiries 230916' 23 September 2016
- 85 Bloomberg website 'Company overview of PT Rajawali Corporation'
- 86 Danubrata and Chow (2016)
- 87 IOI Loders Croklaan website 'List of mills'
- 88 IOI Loders Croklaan website 'List of mills'
- 89 RSP0 website members page 'PT Eagle High Plantations Tbk'
- 90 Under the name of PT Bumi Perdana Prima International; see PT Eagle High Plantations Tbk (2014) p43
- 91 PT Eagle High Plantations Tbk (2015a) p116
- 92 RSP0 website members page 'PT Eagle High Plantations Tbk'

- 93 PT Eagle High Plantations Tbk (2014) pp43-44
- 94 Chain Reaction Research (2014)
- 95 Isa and Idris (2016)
- 96 PT Eagle High Plantations Tbk (2014) p44
- 97 PT Eagle High Plantations Tbk (2015a) pp5, 48
- 98 PT Eagle High Plantations Tbk (2015a) p63 of 'Financial Statements' section
- 99 PT Eagle High Plantations Tbk (2015a) p120
- 100 PT Eagle High Plantations Tbk (2015a) p43
- 101 Jakarta Globe (2016)
- 102 PT Eagle High Plantations Tbk website 'Sustainability policy'
- 103 The High Carbon Stock Approach Steering Group website (<http://highcarbonstock.org/what-is-the-hcs-approach-steering-group/>) describes the HCS Approach as 'a methodology that distinguishes forest areas for protection from degraded lands with low carbon and biodiversity values that may be developed'.
- 104 RSP0 website members page 'PT Eagle High Plantations Tbk'
- 105 PT Eagle High Plantations Tbk (2015b) p5
- 106 PT Eagle High Plantations Tbk (2015b) p7
- 107 PT Eagle High Plantations Tbk (2015b) p7
- 108 PT BW Plantation Tbk (2013) p5
- 109 PT Eagle High Plantations Tbk (2015b) p7
- 110 PT BW Plantation Tbk (2013) p5
- 111 PT Eagle High Plantations Tbk (2015b) p7
- 112 PT BW Plantation Tbk (2013) p6
- 113 PT Eagle High Plantations Tbk (2015b)
- 114 Orangutan Conservancy website 'Gunung Palung Orangutan Conservation Program'
- 115 Greenpeace International (2015)
- 116 Concession size based on Plantation Business License (IUP), permit reference SK Gubernur Papua 107/2009
- 117 Government of Indonesia (2009)
- 118 Arief (2012)
- 119 Based on Hansen Forest Loss data on www.globalforestwatch.org
- 120 PT Tandan Sawita Papua HCV map in Arief (2012) p67
- 121 Down to Earth (2014)
- 122 PT Tandan Sawita Papua (2015)
- 123 Abubar (2013)
- 124 Fransiskan Papua (2014a)
- 125 Cenderawasih Pos (2015); see also Pacific Pos (2015)
- 126 Down to Earth (2014)
- 127 Fransiskan Papua (2014b)
- 128 Testimony of Servot Wamis, Herman Fatagur and Frans Abar at 'Profil Kasus, Temu Rakyat Korban Investasi Kehutanan dan Perkebunan Besar', an event organised by Yayasan Pusaka and other organisations in Waena, Jayapura, 4-7 November 2014
- 129 Environmental Investigation Agency and Telepak (2009)
- 130 Bintang Papua (2011)
- 131 Concession size based on Forest Release permit, reference SK 462/MENHUT-II/2013
- 132 A large cleared area is visible on a Landsat image dated 5 December 2015 but no further clearing was observed on images from 11 April 2016 and 1 August 2016.
- 133 Email to Greenpeace from IOI, 22 September 2016
- 134 Emails to Greenpace from GAR and Wilmar, 20 September 2016
- 135 Golden Agri-Resources Ltd website 'Grievance list'
- 136 Carson Cumberbatch website 'Our history'
- 137 IOI Loders Croklaan website 'List of mills'
- 138 RSP0 website members page 'Goodhope Asia Holdings Ltd'
- 139 Bukit Darah PLC (2015) p164
- 140 The concession names are: PT Agro Indomas, PT Rim Capital, PT Agro Wana Lestari, PT Karya Makmur Sejahtera, PT Agro Bukit, PT Agrajaya Baktitama, PT Batu Mas Sejahtera, PT Sawit Makmur Sejahtera, PT Sumber Hasil Prima, PT Sinar Sawit Andalan, PT Nabire Baru, PT Sariwana Adi Perkasa, PT Agro Bina Lestari and PT Agro Surya Mandiri.
- 141 Goodhope Asia Holdings Ltd (2015)
- 142 Goodhope Asia Holdings Ltd (2015)
- 143 Concession sizes refer to location permits (izin lokasi).
- 144 Carson Cumberbatch PLC (2015)
- 145 Goodhope Asia Holdings Ltd website 'Subsidiaries'
- 146 Goodhope Asia Holdings Ltd website 'Edible oils & fats'
- 147 Carson Cumberbatch PLC (2015) p21
- 148 Carson Cumberbatch website
- 149 Goodhope Asia Holdings Ltd website 'Environment'
- 150 Goodhope Asia Holdings Ltd (2015)
- 151 RSP0 website members page 'Goodhope Asia Holdings Ltd'
- 152 Goodhope Asia Holdings Ltd (2015)
- 153 RSP0 website members page 'Goodhope Asia Holdings Ltd'
- 154 Goodhope Asia Holdings Ltd (2015)
- 155 RSP0 website 'Status of complaints - Case tracker'
- 156 RSP0 (2016a) and RSP0 (2016b)
- 157 Goodhope Asia Holdings Ltd (2015)
- 158 Based on a cloud-free Landsat image from 16 June 2016. No detailed spatial analysis of this image was undertaken to obtain precise figures.
- 159 The relevant guidelines in force at the time were contained in Minister of Agriculture (2007).
- 160 Mawel (2015)
- 161 Permit reference SK Bupati Nabire 74/2010
- 162 Mongabay Indonesia (2013); see also Hanebora (2013)
- 163 Permit Reference SK Gubernur Papua 503/315/Tahun 2014 recorded in Jayapura State Administrative Court (2016)
- 164 Suara Pusaka (2015e)
- 165 Jayapura State Administrative Court (2016)
- 166 Gobai (2016)
- 167 Supriyadi (2016)
- 168 The leader of the Yerisiam group, Simon Petrus Hanebora, who died in February 2015 attempted to raise awareness of the problems in the concessions for many years. An archive of his personal blog can be read at <http://sukuyerisiam.blogspot.com>. See also Suara Pusaka (2015c).
- 169 See Hanebora (2014) for a chronology, and also the statement by the coalition: Suara Pusaka (2015c).
- 170 Suara Pusaka (2015e)
- 171 Yayasan Pusaka (2016)
- 172 Suara Pusaka (2016a)
- 173 Tabloid Jubi (2015)
- 174 Pogau (2013)
- 175 awasMIFEE (2014)
- 176 Suara Pusaka (2014)
- 177 Email to Greenpeace from IOI, 22 September 2016
- 178 Emails to Greenpeace from GAR and Wilmar, 20 September 2016
- 179 Wilmar website 'Grievance list with progress updates'
- 180 Email to Greenpeace from Musim Mas, 20 September 2016
- 181 Email to Greenpeace from Goodhope, 23 September 2016
- 182 Email to Greenpeace from Goodhope, 23 September 2016
- 183 Goodhope (2013) 'Conservation and New Development Policy'
- 184 BSI Management Systems (20110) Public Summary Report 'New Plantings Assessment: PT Nabire Baru, Papua, Indonesia' July 2011
- 185 BSI Management Systems (20110) Public Summary Report 'New Plantings Assessment: PT Nabire Baru, Papua, Indonesia' July 2011
- 186 Goodhope 'Meeting Minutes' from meeting with Greenpeace 22 September 2016, supplied 23 September 2016
- 187 Email to Greenpeace from Goodhope, 23 September 2016
- 188 Goodhope 'Meeting Minutes' from meeting with

- Greenpeace 22 September 2016, supplied 23 September 2016
- 189 Email to Greenpeace from Goodhope, 23 September 2016
- 190 IndoAgri website 'Consumer branded products'
- 191 OPPUK, Rainforest Action Network and International Labor Relations Forum (2016)
- 192 Aidenvironment (2015)
- 193 IOI Loders Croklaan website 'List of mills'
- 194 IndoAgri website 'Shareholders composition'
- 195 IndoAgri (2016) p111
- 196 IndoAgri (2016) p7
- 197 IndoAgri (2016) p19
- 198 IndoAgri (2016) p22
- 199 IndoAgri (2016) p23
- 200 IndoAgri (2016) p20
- 201 IndoAgri website 'Sustainable palm oil policy'
- 202 IndoAgri website 'Palm oil sourcing policy'
- 203 RSPO website members page 'PT PP London Sumatra Indonesia Tbk'
- 204 RSPO website members page 'PT Salim Ivomas Pratama Tbk'
- 205 IndoAgri (2016) p 13
- 206 PT Salim Ivomas Pratama Tbk (2015). Note that this report appears to cover the whole area of IndoAgri concessions (based on comparison of areas and output levels with the IndoAgri 2015 Annual Report).
- 207 PT Salim Ivomas Pratama Tbk (2015)
- 208 Email to Greenpeace from RSPO Certification Manager Senniah Appalasamy, 1 August 2016: 'The requested NPP report for Isuy Makmur [sic] has been return back to the company due to incomplete documentation. LUCA and GHG reports were not submitted as required by NPP process. As per the NPP requirement the notification will not be uploaded to the RSPO website if submission is found to be incomplete.'
- 209 The current name of this concession is unclear. The concession is located to the west of Lake Jempang in East Kalimantan. IndoAgri was calling it Kedang Makmur in 2015 in discussions with Aidenvironment, while the name Isuy Makmur was used for the adjoining concession to the south. However, the RSPO NPP for Pahu Makmur and Kedang Makmur submitted on 22 December 2014 uses the name Kedang Makmur for a different concession some kilometres away, south of Lake Jempang, and includes a map combining both concessions west of Lake Jempang under the name Issuy Makmur. (Source: PT PP London Sumatra Indonesia (2014).) Regardless of the name of the concession, it clearly belongs to IndoAgri.
- 210 Aidenvironment (2015) pp18–22
- 211 OPPUK, Rainforest Action Network and International Labor Relations Forum (2016)
- 212 Accreditation Services International (2016)
- 213 Email to Greenpeace from IOI, 22 September 2016
- 214 Email to Greenpeace from Musim Mas, 20 September 2016
- 215 Email to Greenpeace from Wilmar, 20 September 2016
- 216 Email to Greenpeace from GAR, 20 September 2016
- 217 Golden Agri-Resources Ltd website 'Grievance list'
- 218 Neslen (2016)
- 219 Eg awasMIFEE (2013), Lawson (2015) and Greenpeace (2015)
- 220 Greenpeace International (2004)
- 221 IOI Loders Croklaan website 'List of mills'
- 222 Mutu Certification International (2015)
- 223 Musim Mas (2016b)
- 224 Aidenvironment (2016) p5
- 225 Aidenvironment (2016) p16
- 226 Aidenvironment (2016) p32 – analysis based on MoEF landcover mapping and Landsat imagery
- 227 See <http://www.intactforests.org/index.html>.
- 228 Aidenvironment (2016) pp32–34 – analysis based on Landsat imagery and NASA fire hotspots
- 229 Aidenvironment (2016) pp26–27 – analysis based on Landsat imagery and NASA fire hotspots
- 230 Neslen (2016)
- 231 Email to Greenpeace from IOI, 22 September 2016
- 232 Aidenvironment (2016)
- 233 Wilmar website 'Grievance list with progress updates'
- 234 Musim Mas website 'Grievance list'
- 235 Musim Mas (2016a)
- 236 Korindo (2016) 'Clarification against the misinformation about Korindo' v.1.0 23 September 2016
- 237 Email to Greenpeace from Korindo, 23 September 2016
- 238 Lembaga Tabung Haji website
- 239 Lembaga Tabung Haji website
- 240 Lembaga Tabung Haji (2015) p7
- 241 This appears to be a misspelling of Sungai Tenegang.
- 242 IOI Loders Croklaan traceability data lists TH Indo Plantations Nyato and Pulai mills with TH Plantations as the parent company, but it is unclear whether these mills are currently owned or managed by TH Plantations/LTH or by TH Indo Plantations, which was sold by LTH in 2014. See Lembaga Tabung Haji (2015) p280.
- 243 IOI Loders Croklaan website 'List of mills'
- 244 RSPO (2012)
- 245 TH Plantations Berhad (2016) p89
- 246 TH Plantations Berhad (2016) p195
- 247 TH Plantations Berhad (2014)
- 248 TH Plantations Berhad (2016) p15
- 249 TH Plantations Berhad (2016) p49 and TH Plantations Berhad (2013)
- 250 Email to Greenpeace from IOI, 22 September 2016
- 251 Emails to Greenpeace from GAR, Musim Mas and Wilmar, 20 September 2016
- 252 Wilmar website 'Grievance list with progress updates'
- 253 Musim Mas website 'Grievance list'
- 254 Email to Greenpeace from AAA/Apical, 23 September 2016
- 255 Email to Greenpeace from IOI, 22 September 2016
- 256 Vit (2016)



GREENPEACE

September 2016

Published by Greenpeace International
Ottho Heldringstraat 5
1066 AZ Amsterdam
The Netherlands

enquiries@greenpeace.org
www.greenpeace.org/costs-of-IOI

Front cover:
4 March 2014, Riau:
Haze from peatland fires near the
village of Teluk Meranti, Pelalawan.
©Muharrman/Greenpeace

